

# SensePlus Smart Aroma Diffuser

(Model : MX-AD-03)

## HKBN Smart User Guide



v.20200930

# Table of Contents

Product Description .....	3
Download HKBN Smart App .....	4
Add Device .....	5
Control Device	
- Introduction of Control Panel .....	9
- Switch On/Off .....	10
- Spray Setting .....	11
- Light Setting .....	12
- Schedule (On or Off automatically) .....	13
Scene (Smart Action) .....	15
Automation (Smart Action) .....	17
Device Information	
- Setting Page Panel .....	19
- Check for Firmware Upgrade .....	20
- Remove Device .....	21
Product Specifications .....	22
Product Maintenance and Warranty .....	23

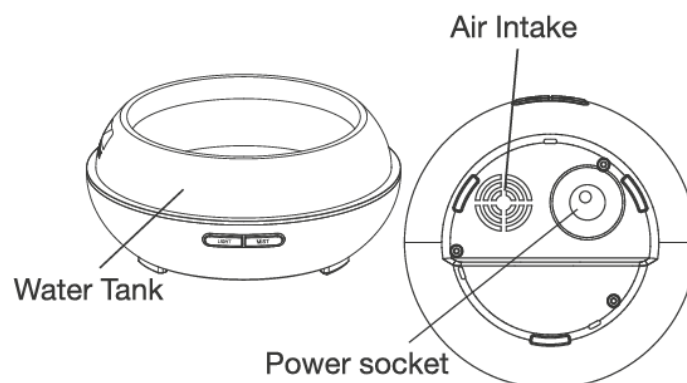
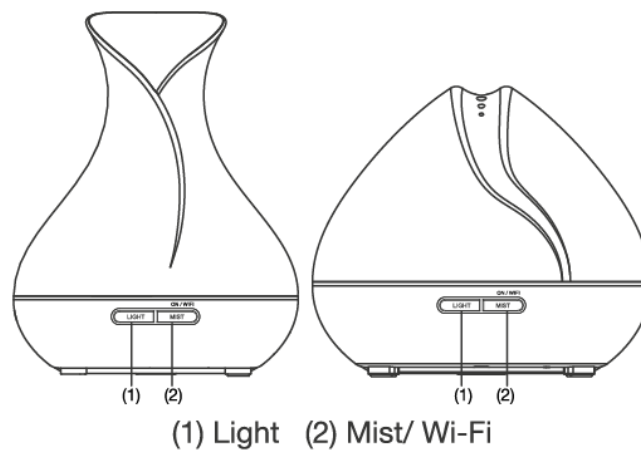
# Product Description

Name : SensePlus Smart Aroma Diffuser

Model : MX-AD-03W (White) / MX-AD-03V (Woodgrain)

Features:

1. Supports voice control (Siri), remotely control from your phone
2. Ultrasonic technology to produce finer mist
3. Soft LED light with over 16million colour options
4. Works even better with essential oil (not provided)



# Download HKBN Smart App



Search and download “HKBN Smart” APP in Apple App Store OR Google Play Store

OR

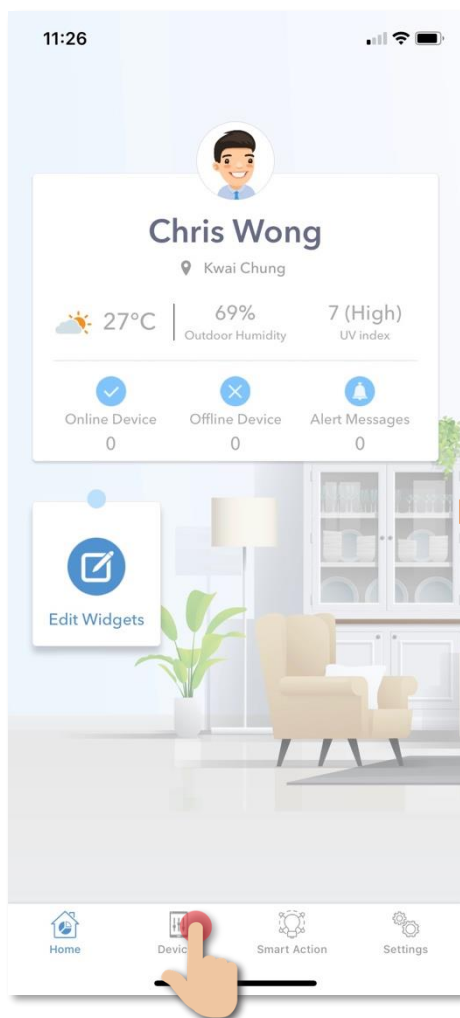
Scan the QR code below



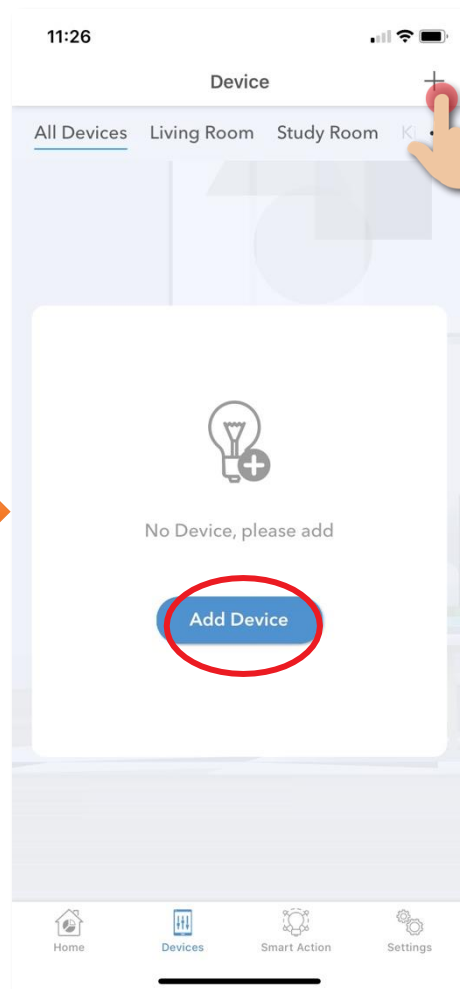
# Add Device

1. You must first connect your phone to a 2.4GHz Wi-Fi network when adding device;
2. Tap “Devices” on the bottom menu (image 1);
3. Tap “Add Device” button OR “+” icon at top right corner if you already have paired device (image 2);

(image 1)

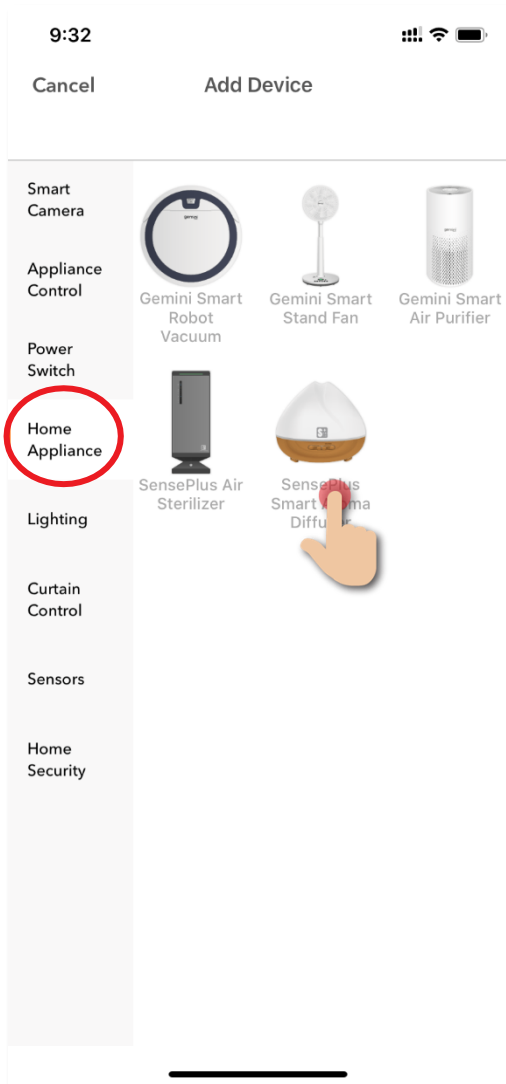


(image 2)

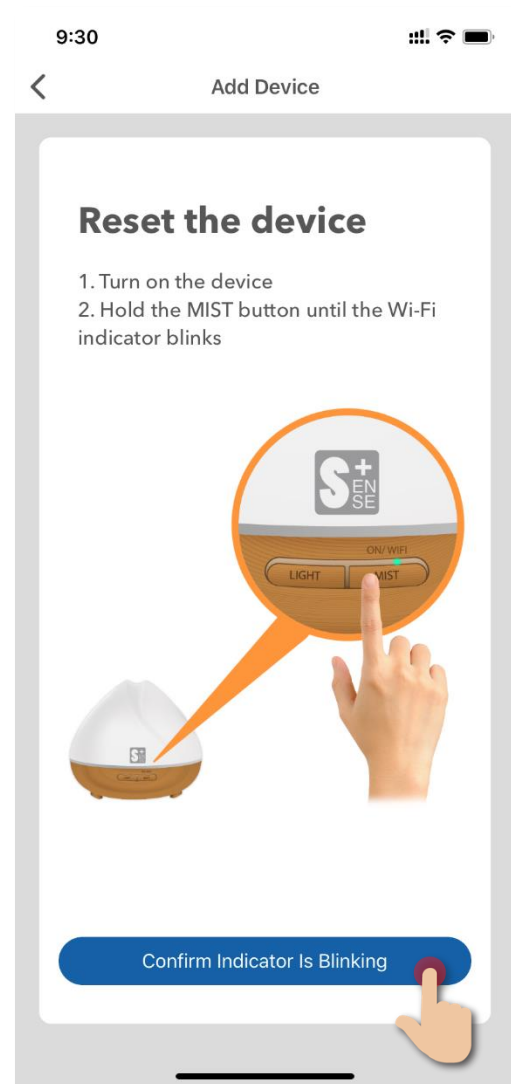


4. Tap “SensePlus Smart Aroma Diffuser” from left menu “Home Appliance” (image 3);
5. Hold the “MIST button” on the device until the Wi-Fi indicator blinks (image 4);

(image 3)



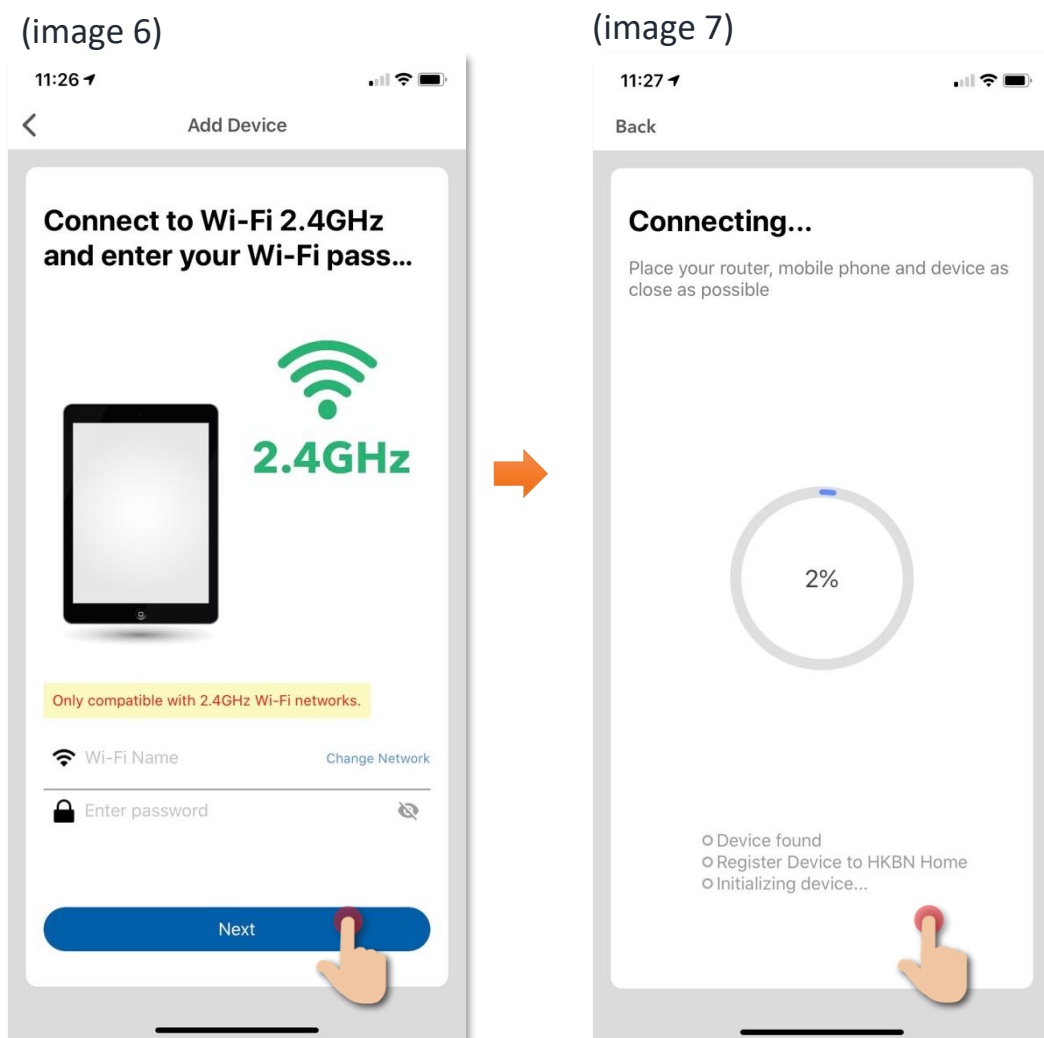
(image 4)



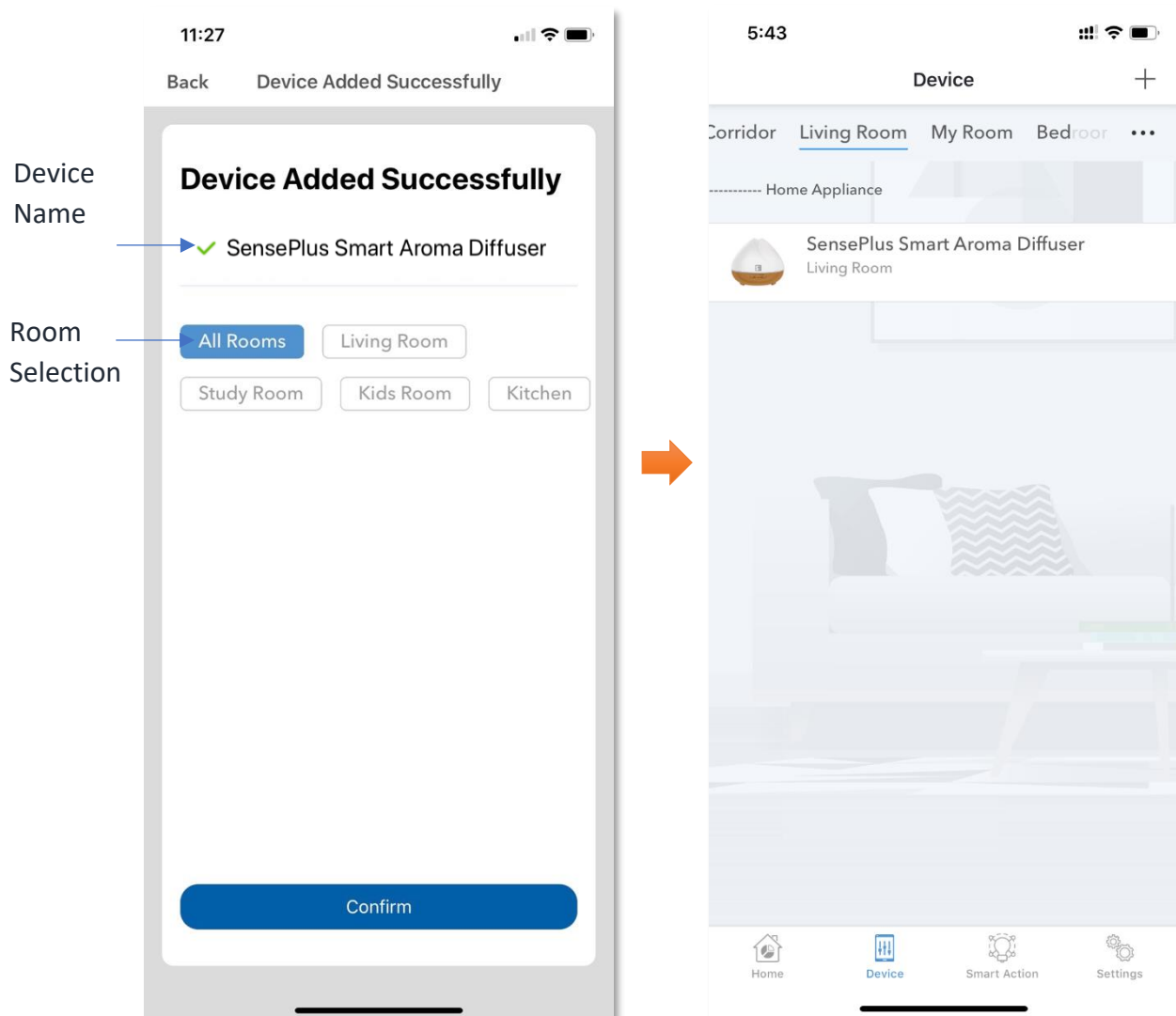
6. Select Wi-Fi network and enter password\*, and then tap “Next” (image 6);
7. Please wait a moment while your device is in pairing process. (image 7)

### \*Important tips: Wi-Fi requirement

- Currently all smart devices are compatible to **2.4GHz network** only. Please make sure that your device and mobile are connected with 2.4GHz but not 5GHz Wi-Fi network.
- If you have 2.4GHz and 5GH Wi-Fi channel and they are using same SSID, we suggest to edit it to different name before pairing. If you insist to use the same SSID on two channels, please turn off the 5GHz channel first before pairing.



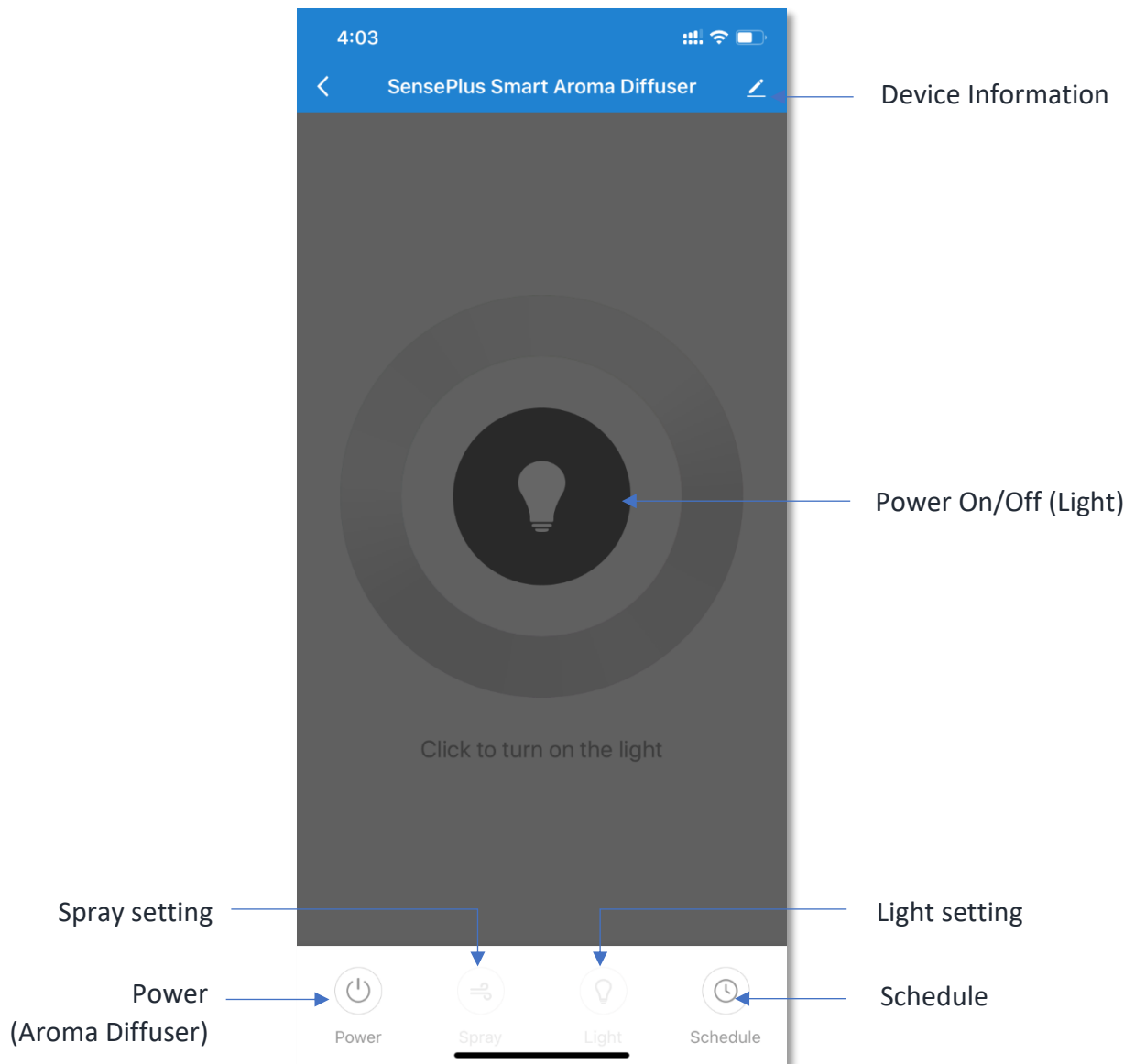
8. After device added successfully, you can change the device name and assign it to the located room. (You can also change the device name and room location later in device setting page and room management page.) And you can find the paired device in the “Device” page.





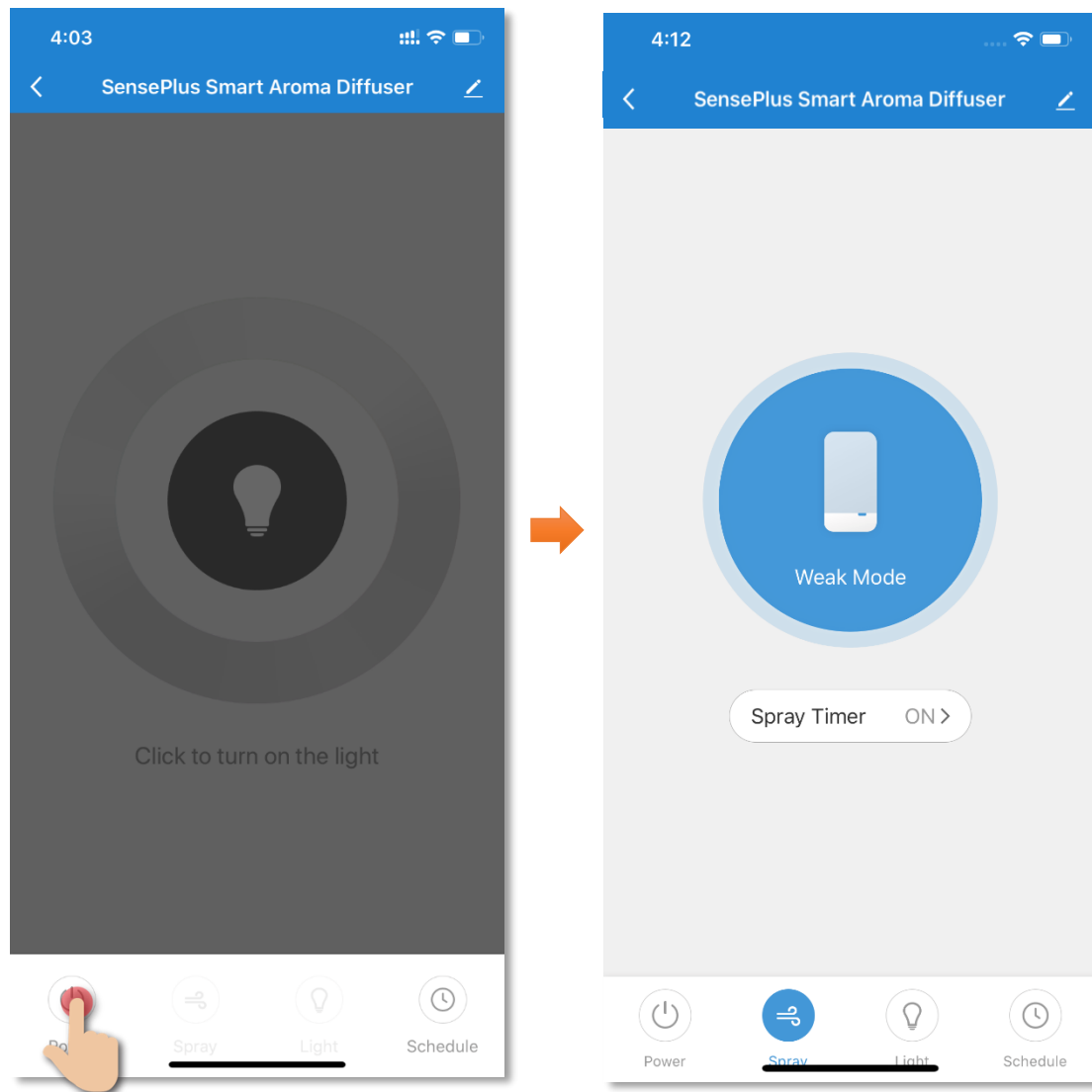
# Control Device

- Introduction of Control Panel



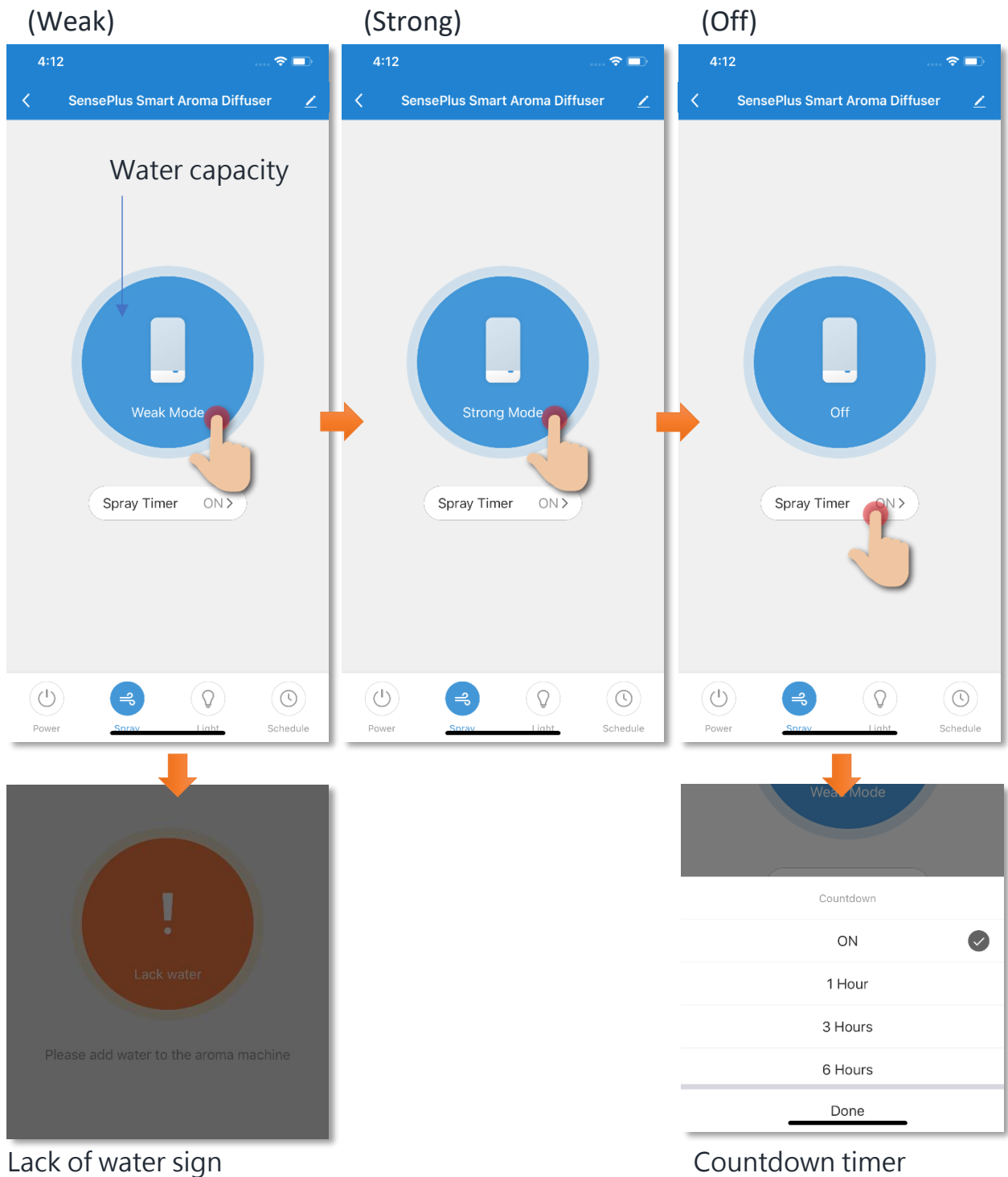
- **Switch On/Off**

You can press the “Switch” key to turn on or off your SensePlus Smart Aroma Diffuser remotely.



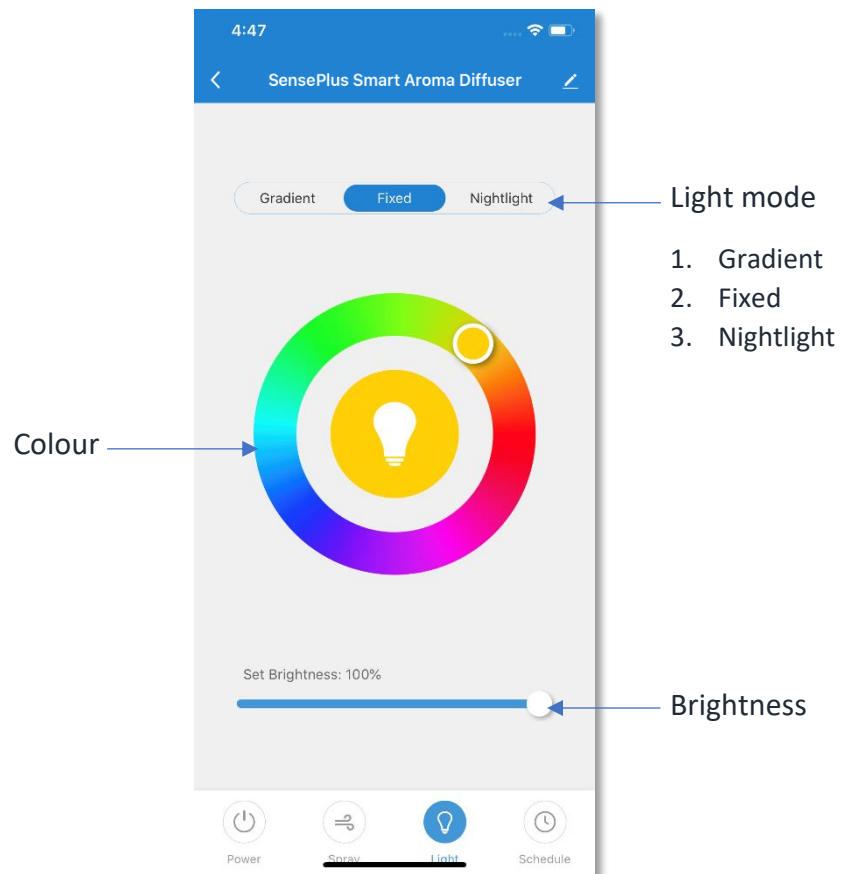
- **Spray Setting**

Tap “Spray” to enter the setting page of spray, you can select different spray modes and also set a countdown timer.



## • Light Setting

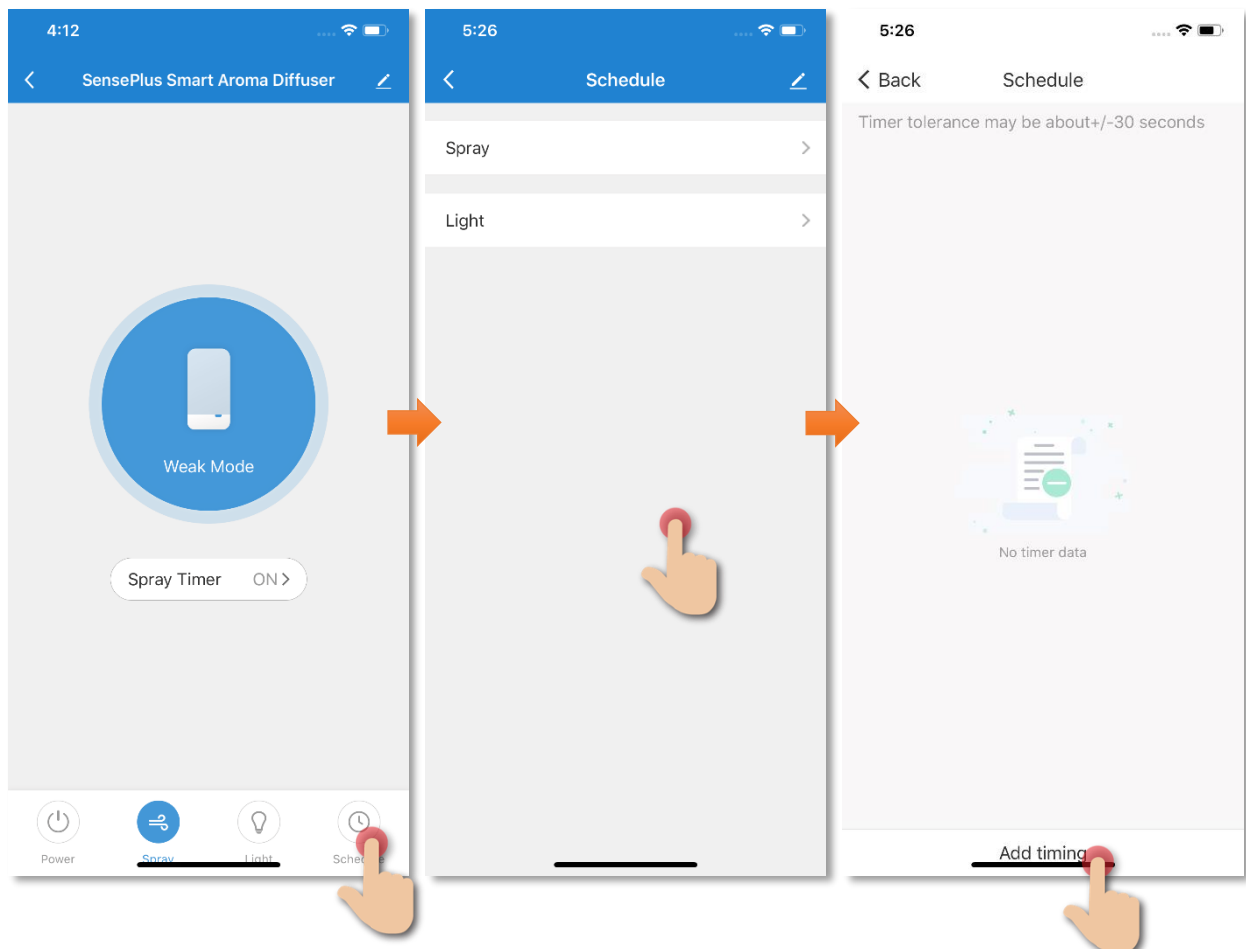
Tap “Light” in the menu, you can set light colour, brightness of the SensePlus Smart Aroma Diffuser.



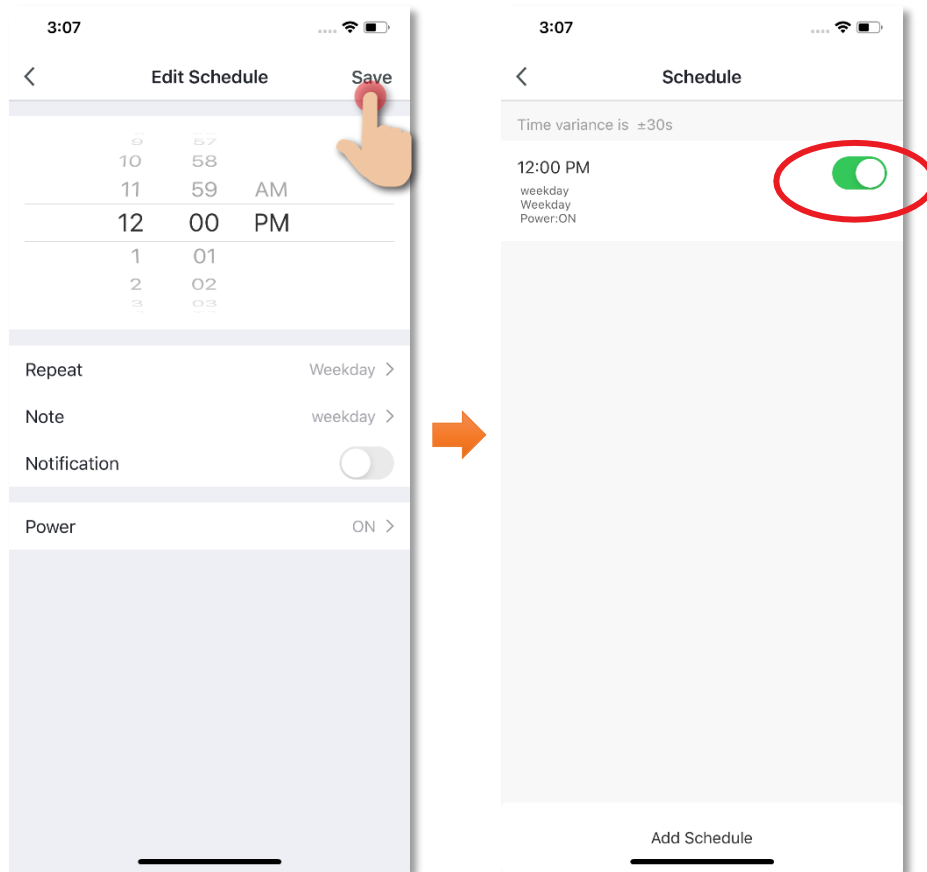
- **Schedule (On or Off automatically)**

You can set schedule to turn on/off automatically:

1. Tap “Schedule”;
2. Select “Spray” or “Light”;
3. Tap “Add timing”;



4. Set the time and save the schedule;
5. Tap the button to enable or disable the schedule.



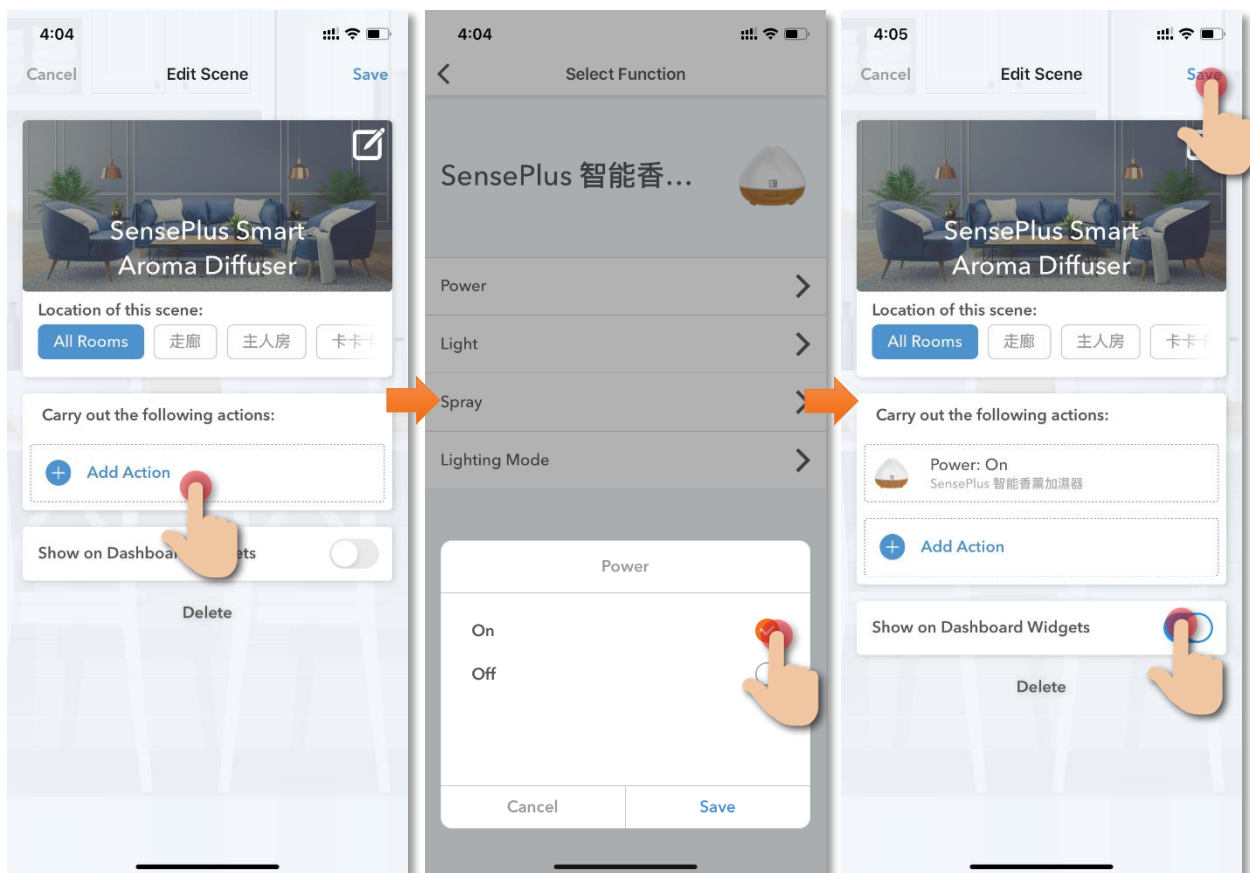
# Scene (Smart Action)

The integration of different smart devices is the beauty of smart home living which provides convenience and many possibilities of creating your preferred control settings. By setting SCENE, you can execute different smart devices at the same time by only one single tap. You can tailor make your unique scene such as movie time scene, welcome/back home scene, reading scene etc.

## User Voice Command to Turn On or Off SensePlus Smart Aroma Diffuser

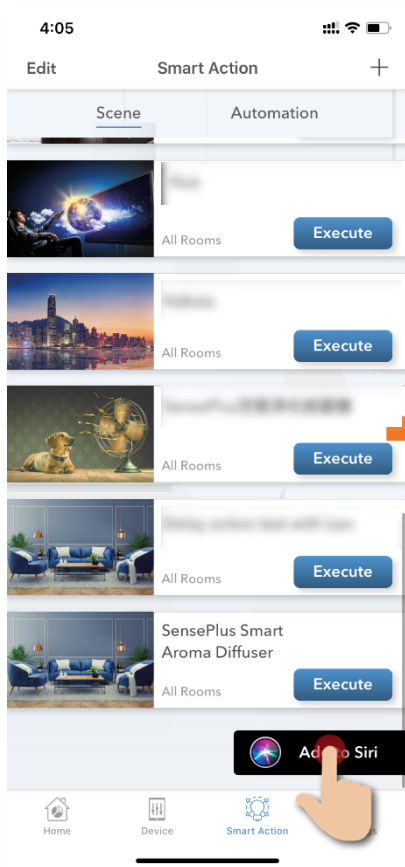
Instructions below explain how to create a Scene:

1. In "Smart Action" under the page of "Scene", tap "+" to add new Scene, and then tap "Add Action"
2. Select SensePlus Smart Aroma Diffuser and tap "Switch", and set light, spray, then select "On". (If turn off the Air Purifier then select "Off")
3. Tap to enable "Show on Dashboard Widgets", tap "Save" on the top right corner to complete

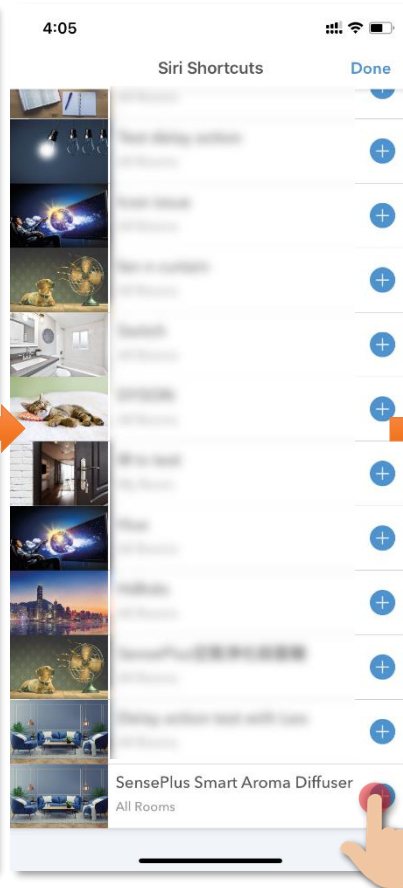


## How to add Siri Command into Scene:

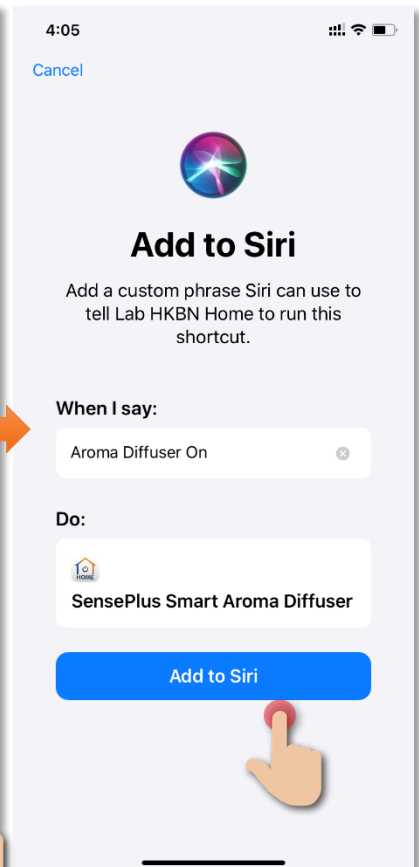
1. In the page of "Scene", tap "Add to Siri"



1. In Siri Shortcuts, select the scene you would like to add Voice command



3. Input the voice command you want and then tap "Add to Siri" to complete





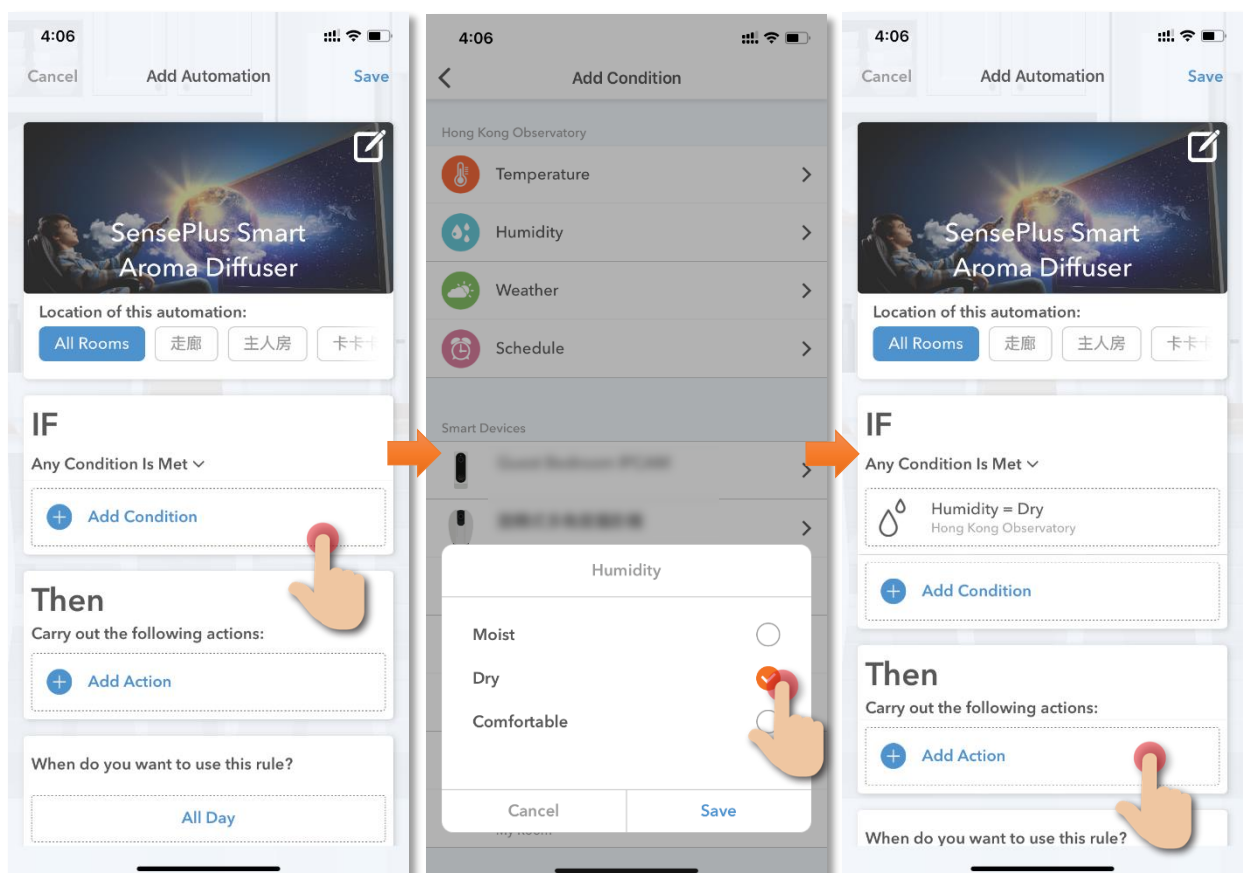
# Automation (Smart Action)

AUTOMATION can carry out device actions automatically by pre-conditions like environment factors or smart device status. You can handover this complex and important daily works to HKBN Smart for a convenient and simple living. Automation included the setting of Temperature, Humidity, Weather and Schedule as condition to trigger different control in smart devices. Below is the automation example of SensePlus Air Sterilizer:

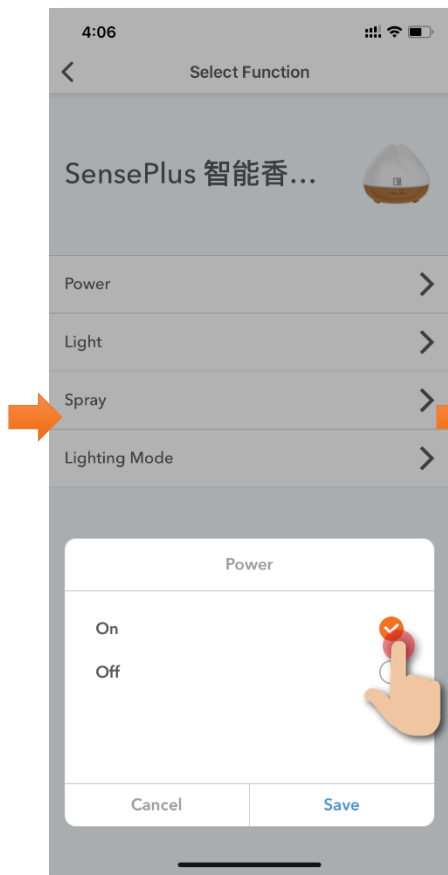
## Turn on SensePlus Smart Aroma Diffuser when weather condition is dry

Instructions below explain how to create an Automation:

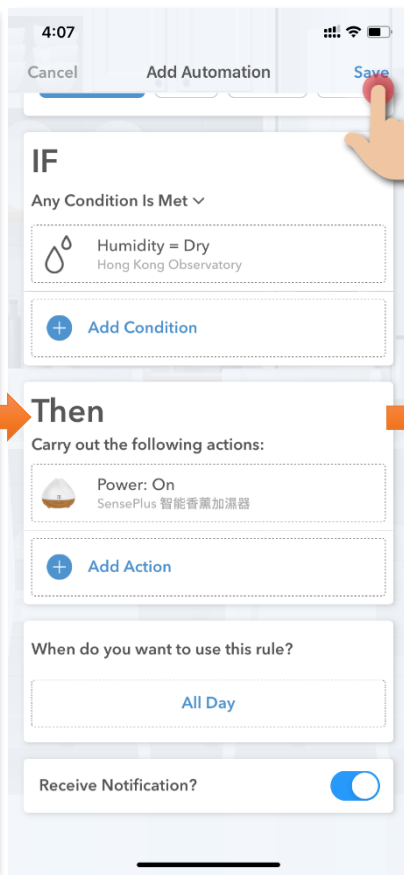
1. In "Smart Action" under the page of "Automation", tap "+" to add new Automation, and then tap "Add Condition"
2. Tap "Humidity" and select "Dry"
3. Tap "Add Action"



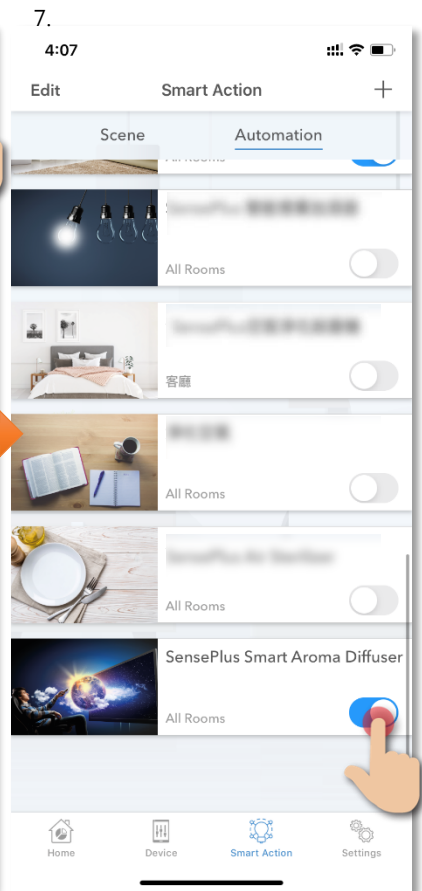
4. Select "SensePlus Smart Aroma Diffuser" and tap "On" in power



5. Save automation.

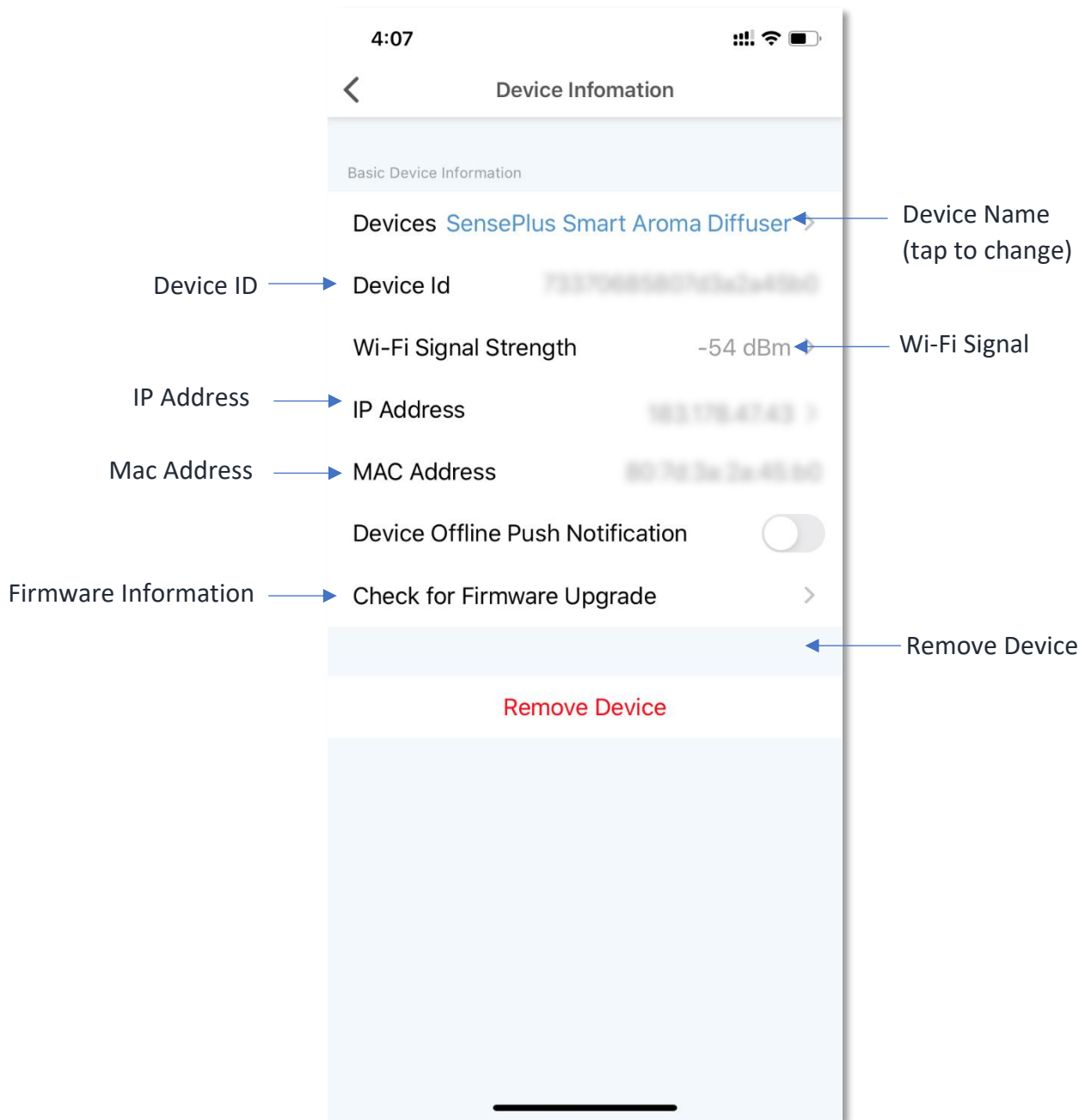


6. In the page of automation, you can enable or disable automation



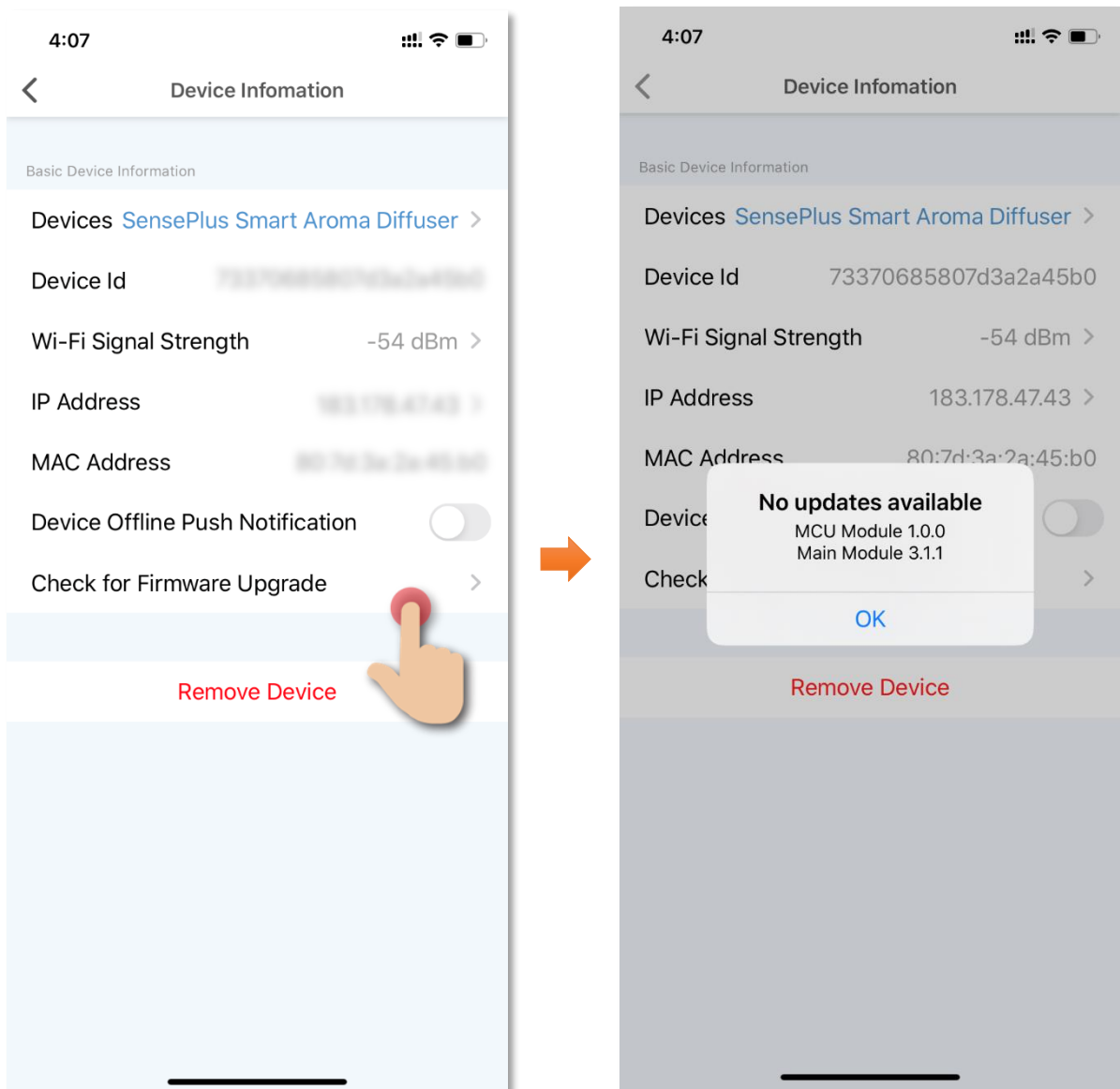
# Device Information

- Setting Page Panel



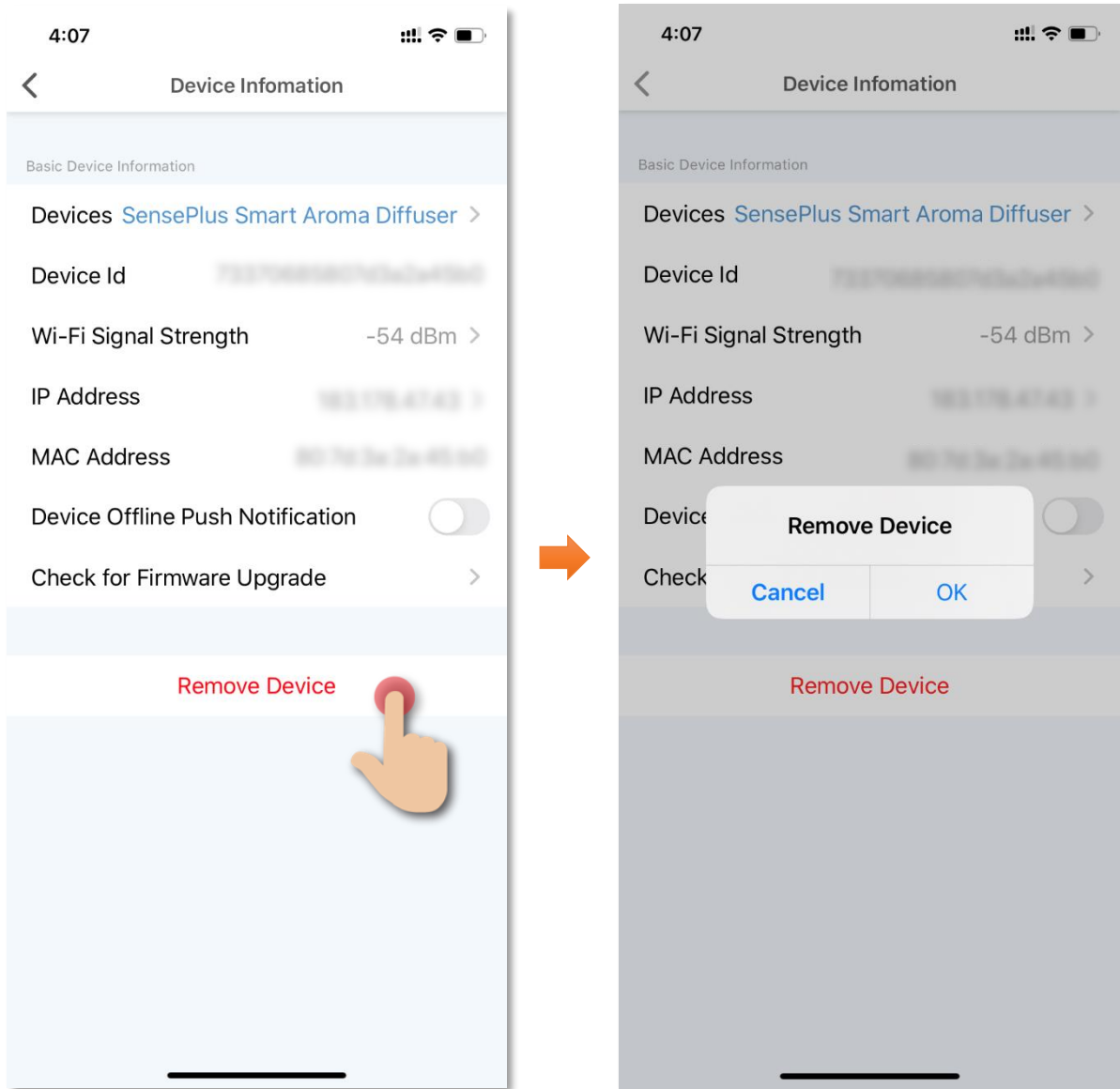
- **Check for Firmware Upgrade**

Tap “Check for Firmware Upgrade”, you can see current firmware version and available upgrade version if any. Tap “Upgrade” to start firmware upgrade



- **Remove Device**

1. In device settings page, tap “Remove Device”;
2. Tap “OK” to confirm and remove device from your account.



# Product Specifications

- Compliance with: CE, FCC
- Colour: Woodgrain / White
- Capacity: 400ml
- LED light: RGB LED lights, over 16 million hues of light
- Power: 13.5W
- Voltage/ Amps: DC 24V/650MA
- Wireless Standard: IEEE 802.11b/g/n, 2.4GHz
- Ultrasonic Frequency: 2.4MHz
- Mist Output: 30 – 80ml/h (Woodgrain),  
25 – 65ml/h (White)
- Maximum Run Time with full capacity of water:  
around 10 hours (auto power off when water runs out)
- Dimensions: 169 x 169 x 215mm (Woodgrain)  
169 x 169 x 145mm (White)
- Weight: 720g (Woodgrain), 650g (White)

# Product Maintenance and Warranty

For the enquiry of product maintenance and warranty, please contact the product distributor/ manufacturer below:

## Maxisense IoTech Limited

- Service Center : Room 1010, Peninsula Tower, 538 Castle Peak Road, Cheung Sha Wan, Kowloon, Hong Kong
- Tel. : (852) 3500 8222
- Email : [info@Maxisense.io](mailto:info@Maxisense.io)
- Working Hour : (Monday to Friday) 9:30am - 12:30pm, 2:00pm - 6:00pm (No service on Saturday, Sunday and Public Holiday)

If you would like to check the device on the same day, please call to make an appointment to avoid long waiting time.

Just in case the hotline is busy, please leave a voice message and your enquiry will be responded to as soon as possible.

Should you have any query, please call our Customer Service Hotline at 3492 0110.