

# SensePlus Air Sterilizer

(Model : MX-AP-01)

## HKBN Smart User Guide



v.20210923

# Table of Contents

Product Description .....	3
Product Installation.....	4
Download HKBN Smart App .....	7
Add Device.....	8
Control Device	
- Introduction of Control Panel.....	12
- Switch On or Off.....	13
- Fan Speed Control .....	14
- Countdown Timer .....	15
- Schedule.....	16
- Setting (Reset filter and UV light) .....	18
Scene (Smart Action) .....	19
Automation (Smart Action).....	21
Device Information	
- Setting Page Panel.....	24
- Check for Firmware Upgrade.....	25
- Remove Device.....	26
Product Specifications .....	27
Product Maintenance and Warranty.....	28

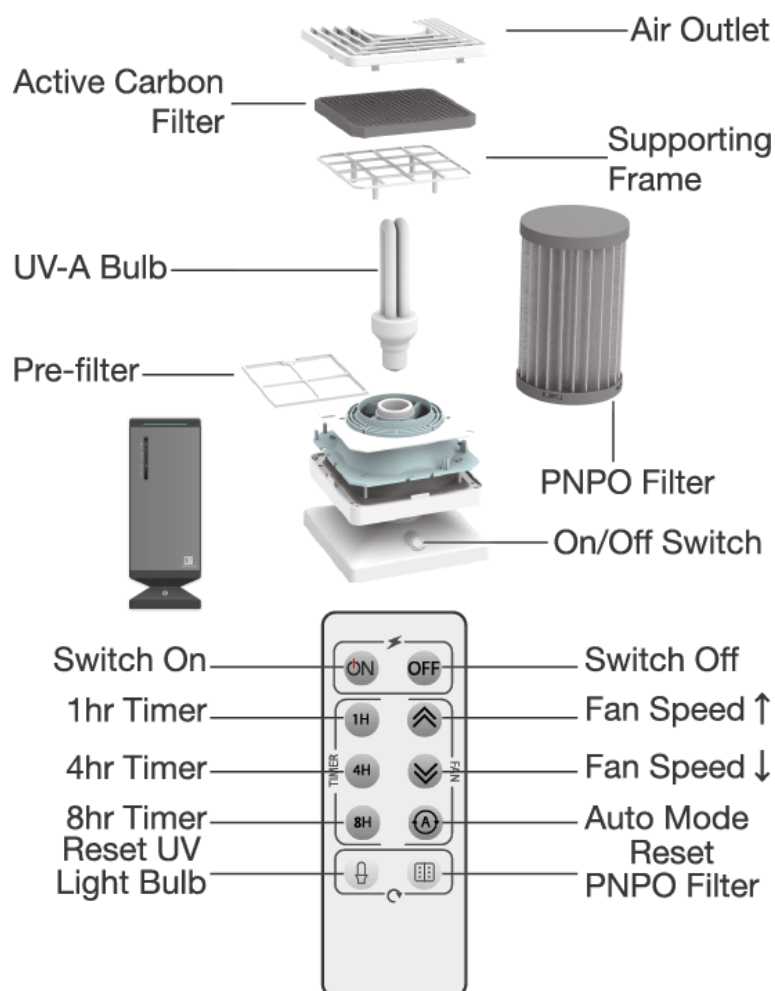
# Product Description

Name : SensePlus Air Sterilizer

Model : MX-AP-01

Features:

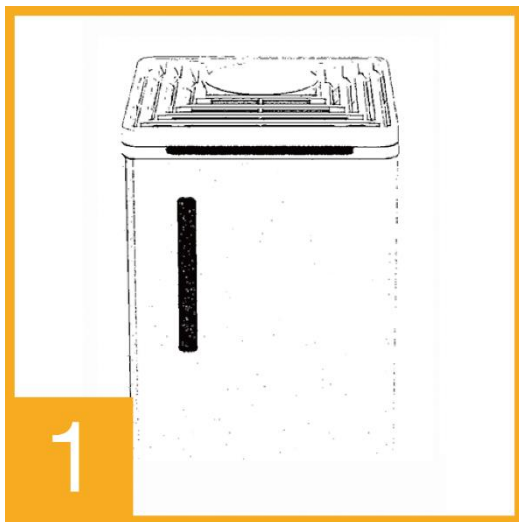
1. Washable and reusable filter (Wash every 3 months for the best results)
2. Test proven PNPO® technology can kill 99.5% of Bacteria and virus
3. Remote control by mobile device and execute smart scene/automation actions



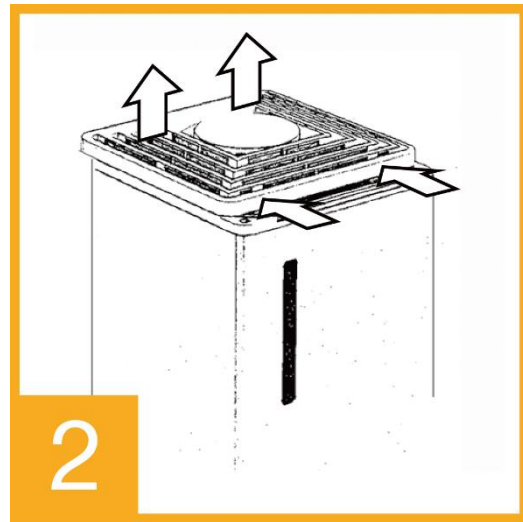
# Product Installation

Important: During the first time of use, please install the UV light bulb for sterilization.

Step-by-step Tutorial:



The LED Indicator is on the front side of the Air Sterilizer.



Remove the lid by pushing it backwards then lift it up.



Remove the active carbon filter, please remove the plastic packaging when unboxing.



Remove the supporting frame.

# Product Installation

Step-by-step Tutorial:



Lift up the PNPO filter.

An UV lightbulb is placed inside the filter, please remove its packaging.



After removing the package, install the UV light bulb, make sure it is firmly inserted.



UV lightbulb inserted.



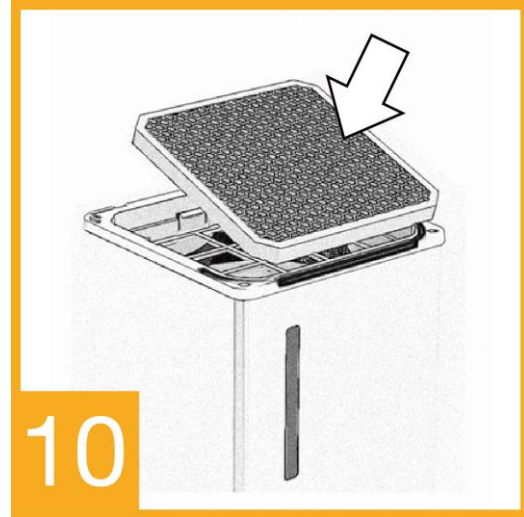
Carefully insert the PNPO filter, sit it tightly.

# Product Installation

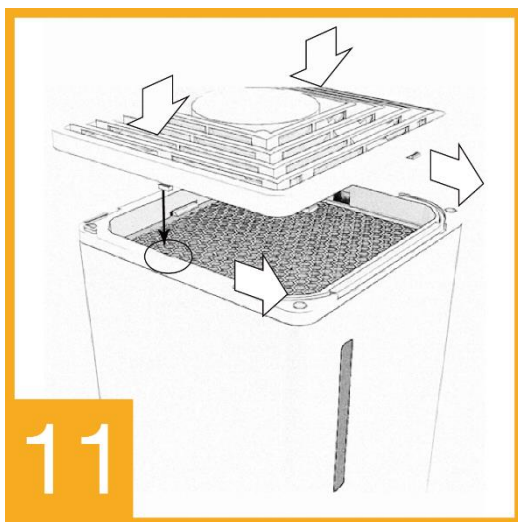
Step-by-step Tutorial:



Place the supporting frame.



Insert the active carbon filter.



Place the lid on top and push it into place, installation complete.

# Download HKBN Smart App



Search and download “HKBN Smart” APP in Apple App Store OR Google Play Store

OR

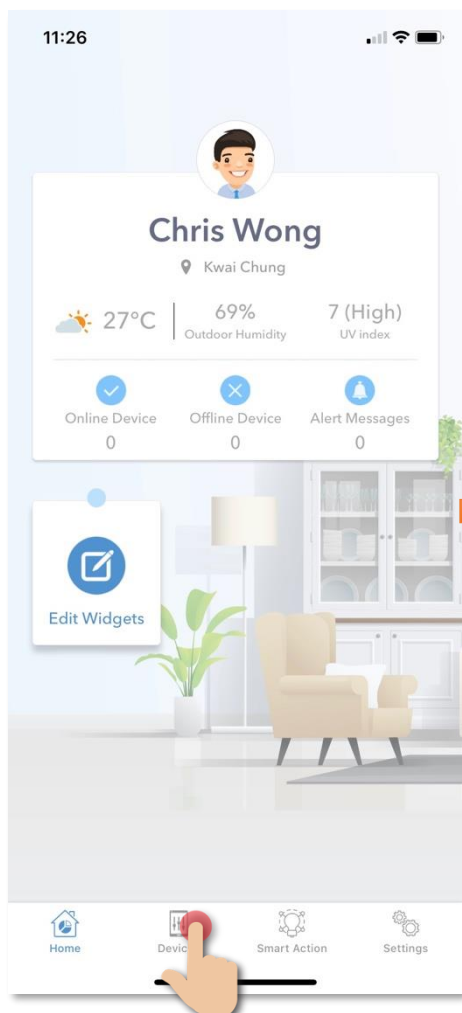
Scan the QR code below



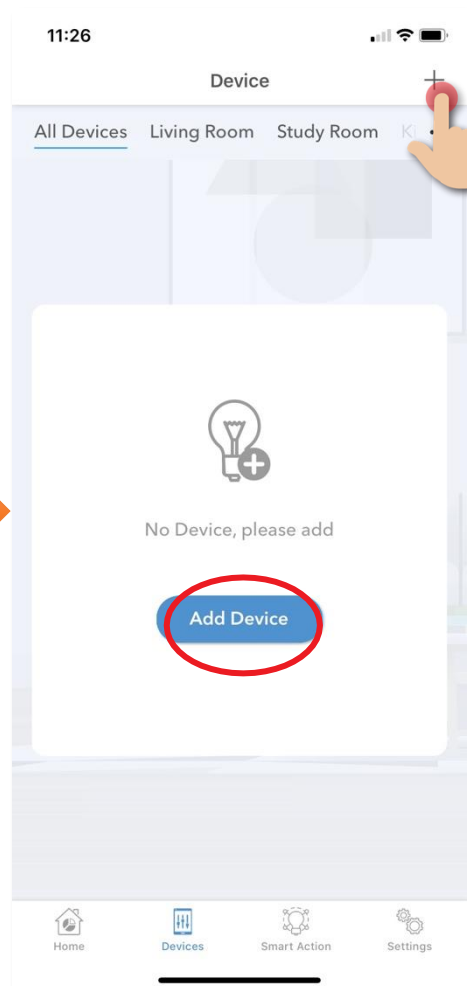
# Add Device

1. You must first connect your phone to a 2.4GHz Wi-Fi network when adding device;
2. Tap “Devices” on the bottom menu (image 1);
3. Tap “Add Device” button OR “+” icon at top right corner if you already have paired device (image 2);

(image 1)



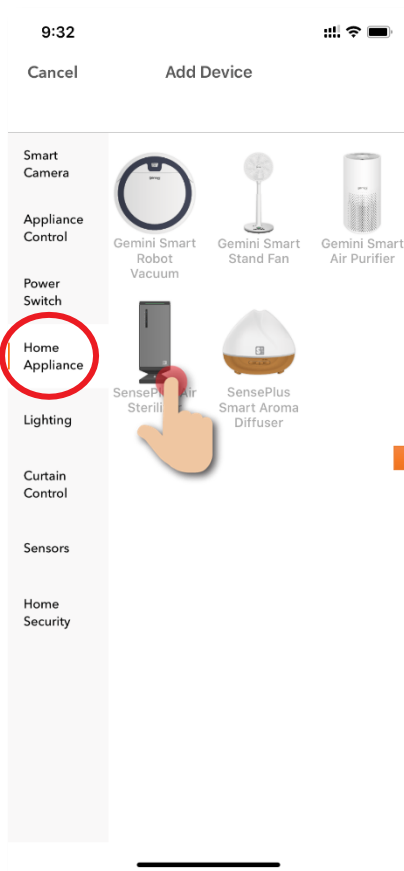
(image 2)





4. Tap "SensePlus Air Sterilizer" from left menu "Home Appliance" (image 3);
5. Hold the ON button on the remote until the Wi-Fi indicator blinks (image 5);

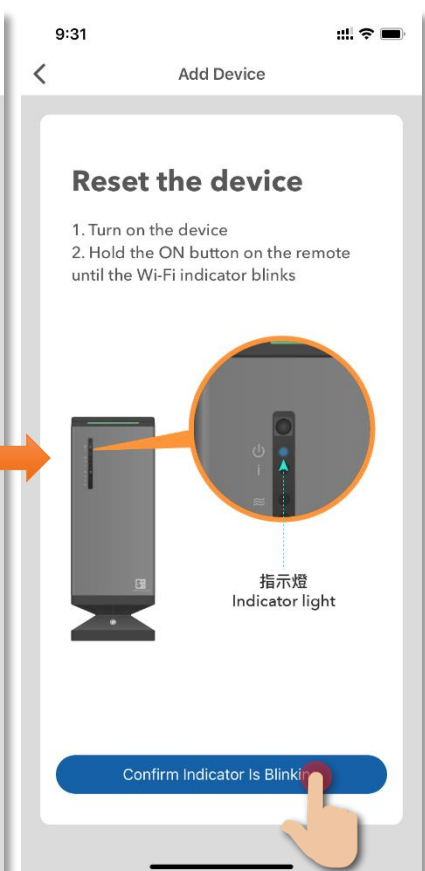
(image 3)



(image 4)



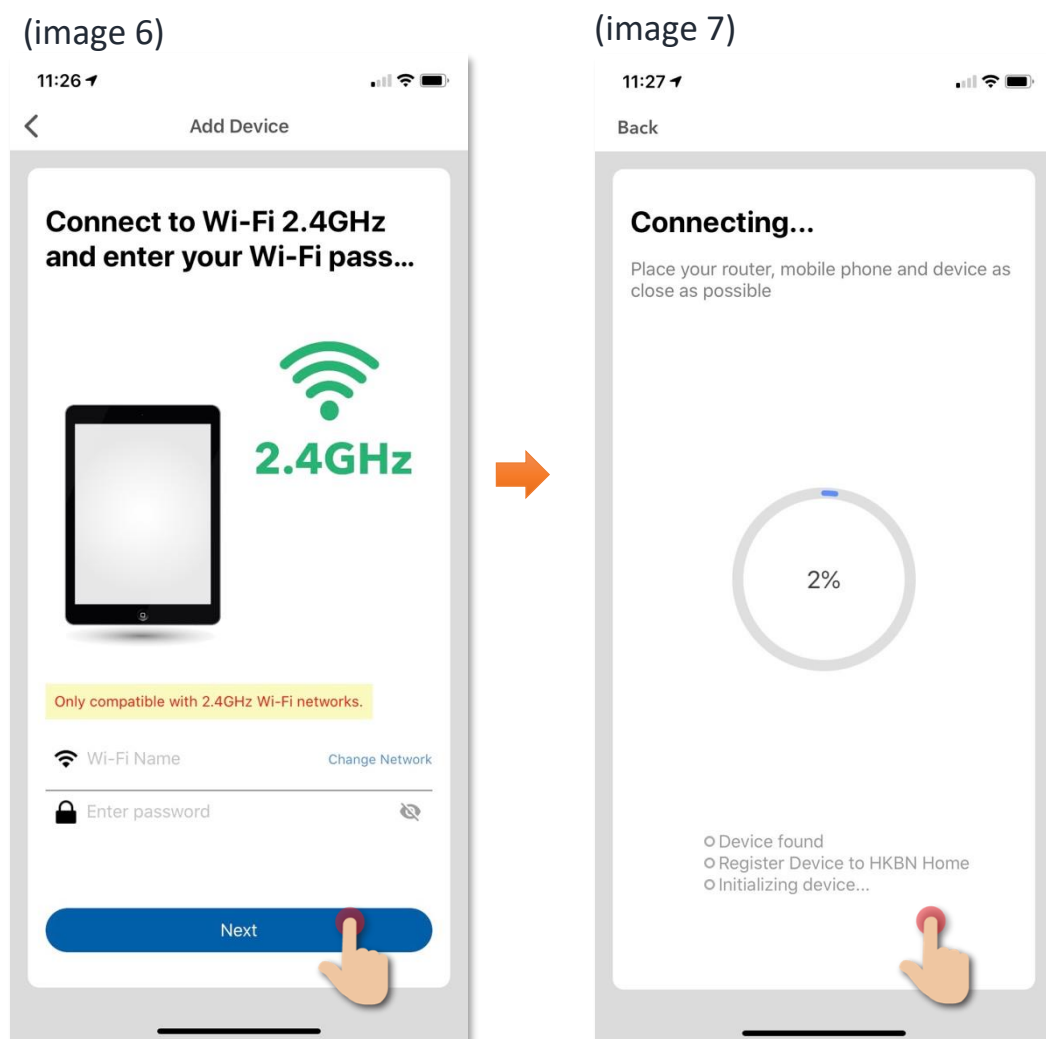
(image 5)



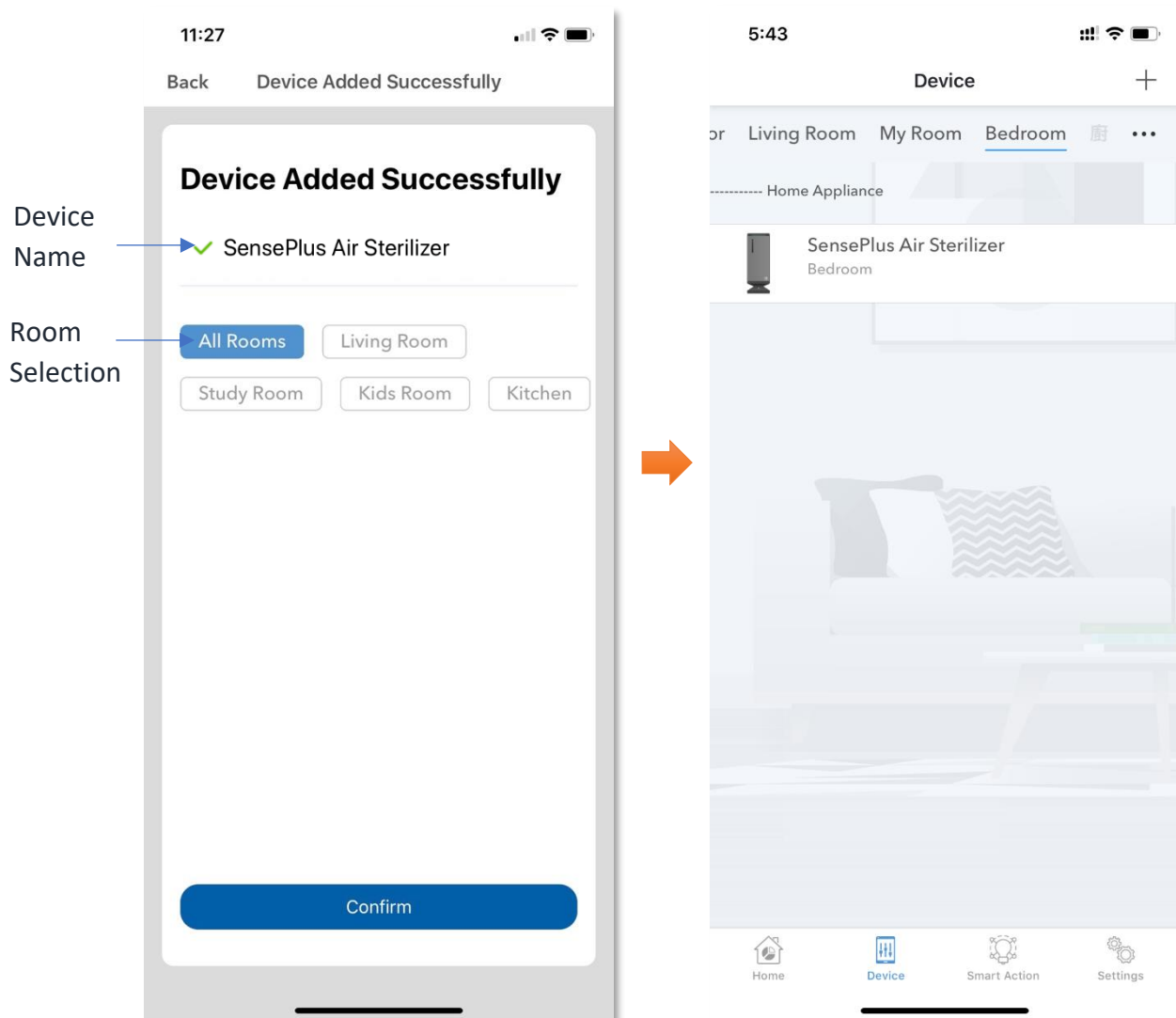
6. Select Wi-Fi network and enter password\*, and then tap “Next” (image 6);
7. Please wait a moment while your device is in pairing process. (image 7)

### \*Important tips: Wi-Fi requirement

- Currently all smart devices are compatible to **2.4GHz network** only. Please make sure that your device and mobile are connected with 2.4GHz but not 5GHz Wi-Fi network.
- If you have 2.4GHz and 5GHz Wi-Fi channel and they are using same SSID, we suggest to edit it to different name before pairing. If you insist to use the same SSID on two channels, please turn off the 5GHz channel first before pairing.

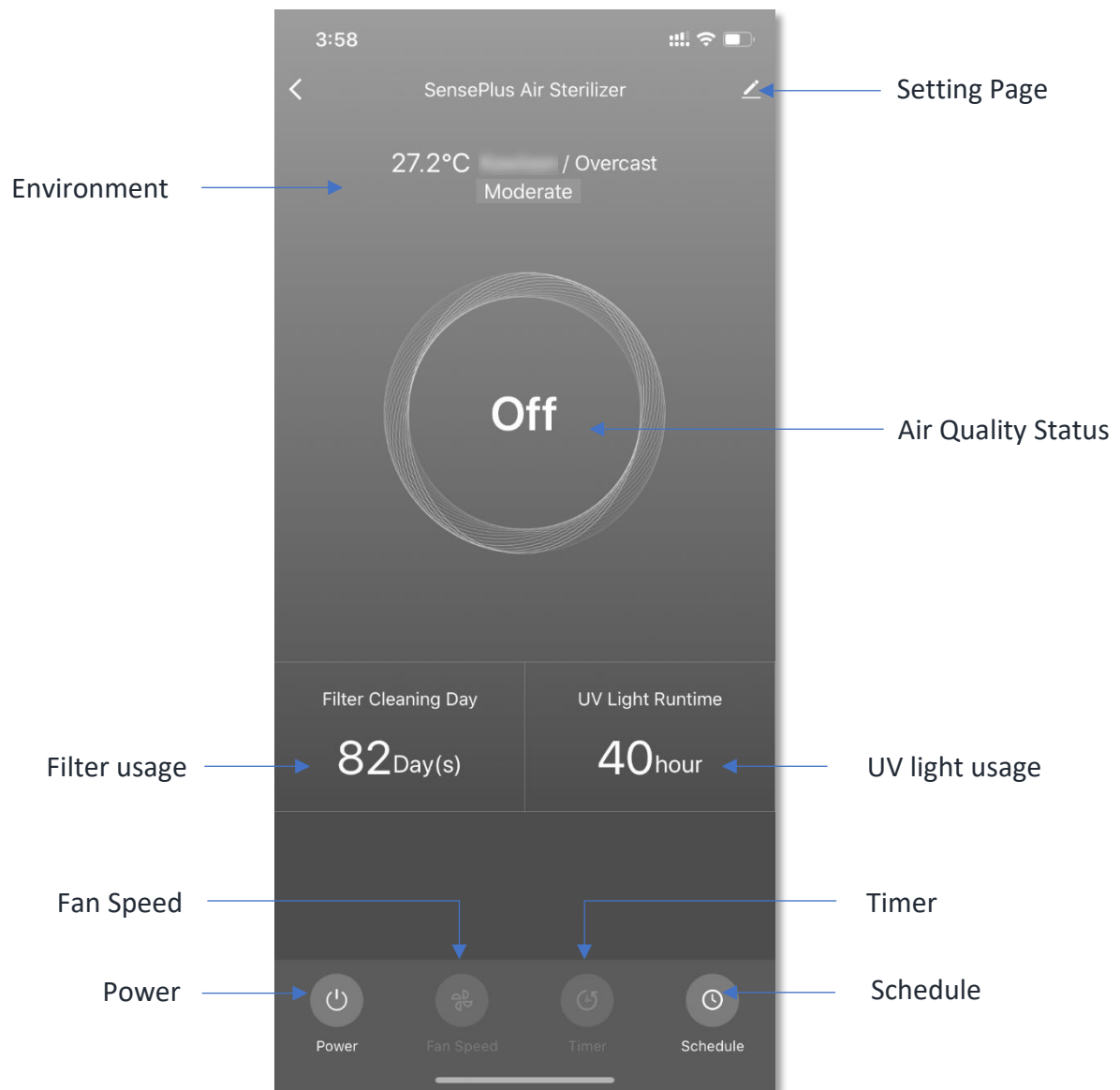


8. After device added successfully, you can change the device name and assign it to the located room. (You can also change the device name and room location later in device setting page and room management page.) And you can find the paired device in the “Device” page.



# Control Device

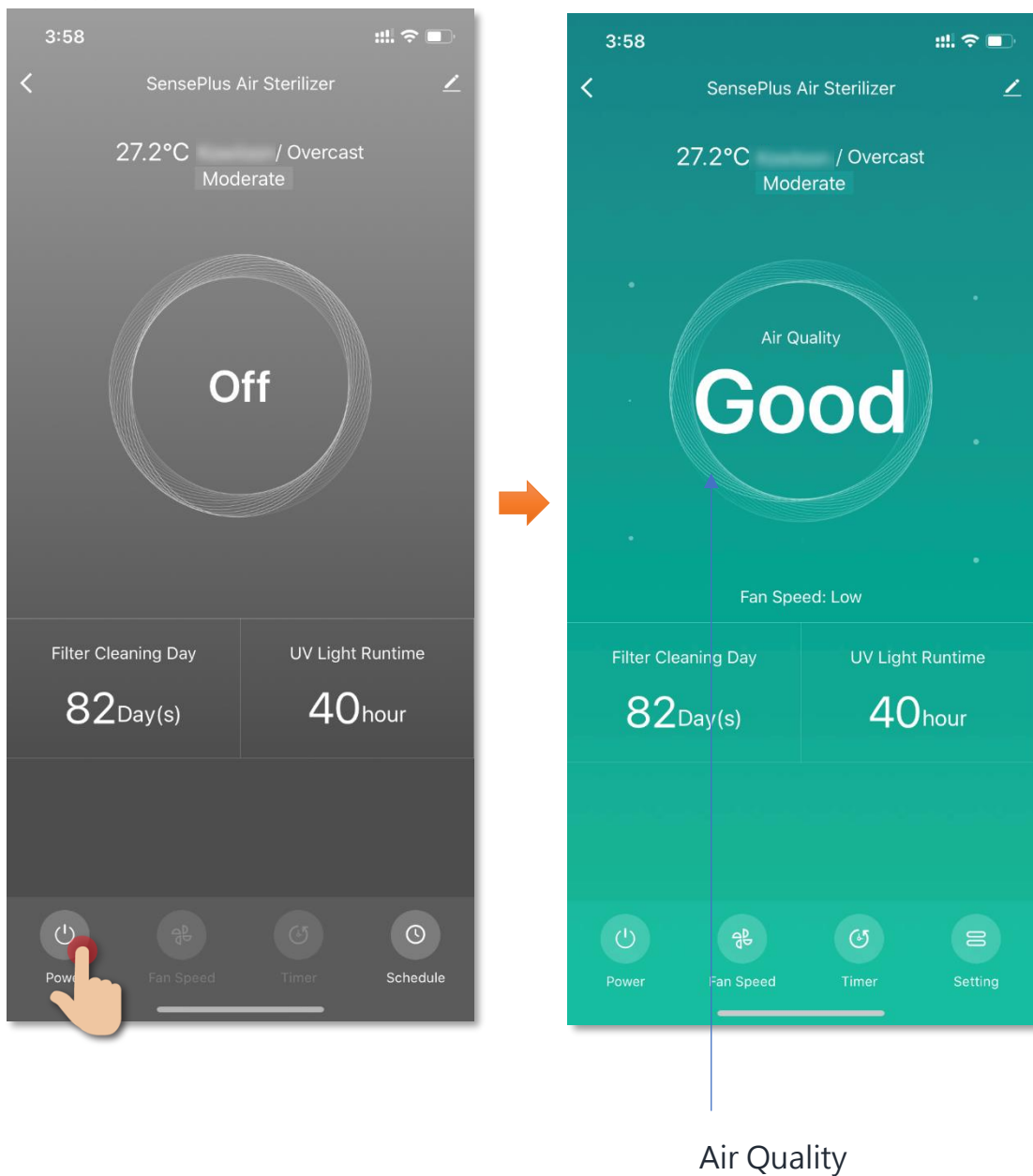
- Introduction of Control Panel



- **Switch On or Off**

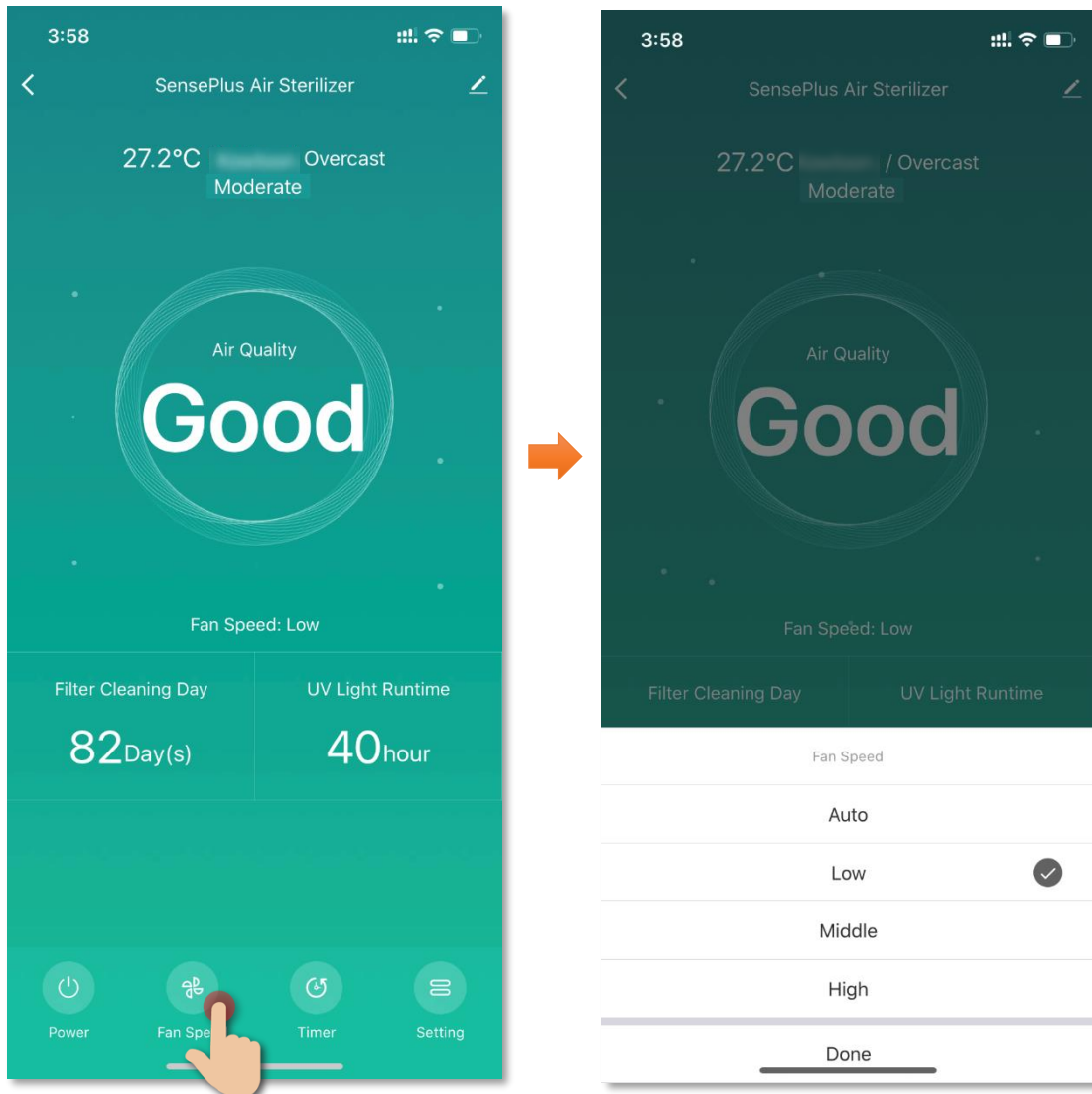
You can press the “Power” button to turn on or off your SensePlus Air Sterilizer remotely. It will show a “Off” notice on screen after you switched off the air sterilizer. (image 1)

(image 1)



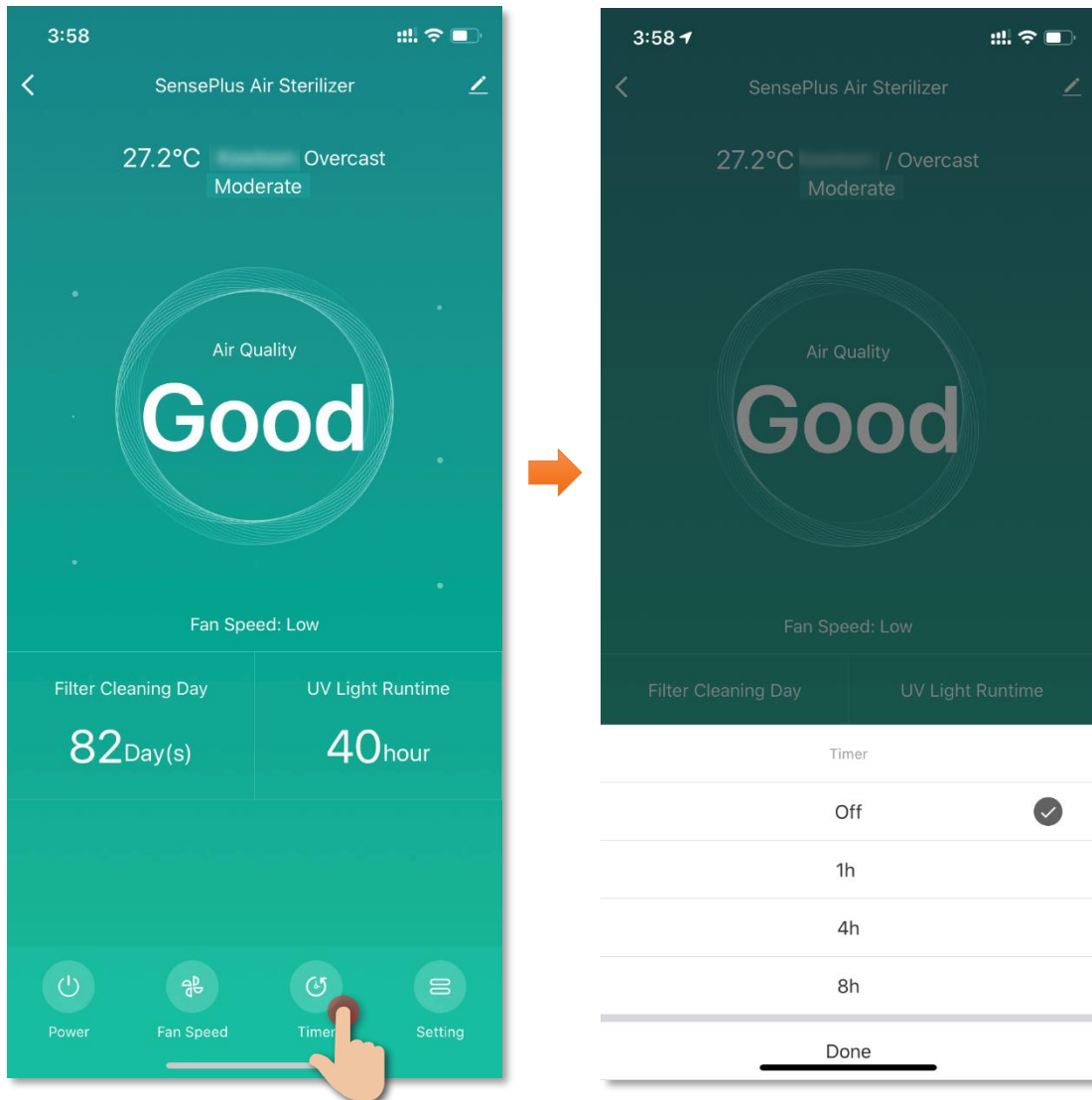
- **Fan Speed Control**

Tap “Fan Speed” to select 4 different fan speed levels: Low, Middle, High or Auto mode.



- **Countdown Timer**

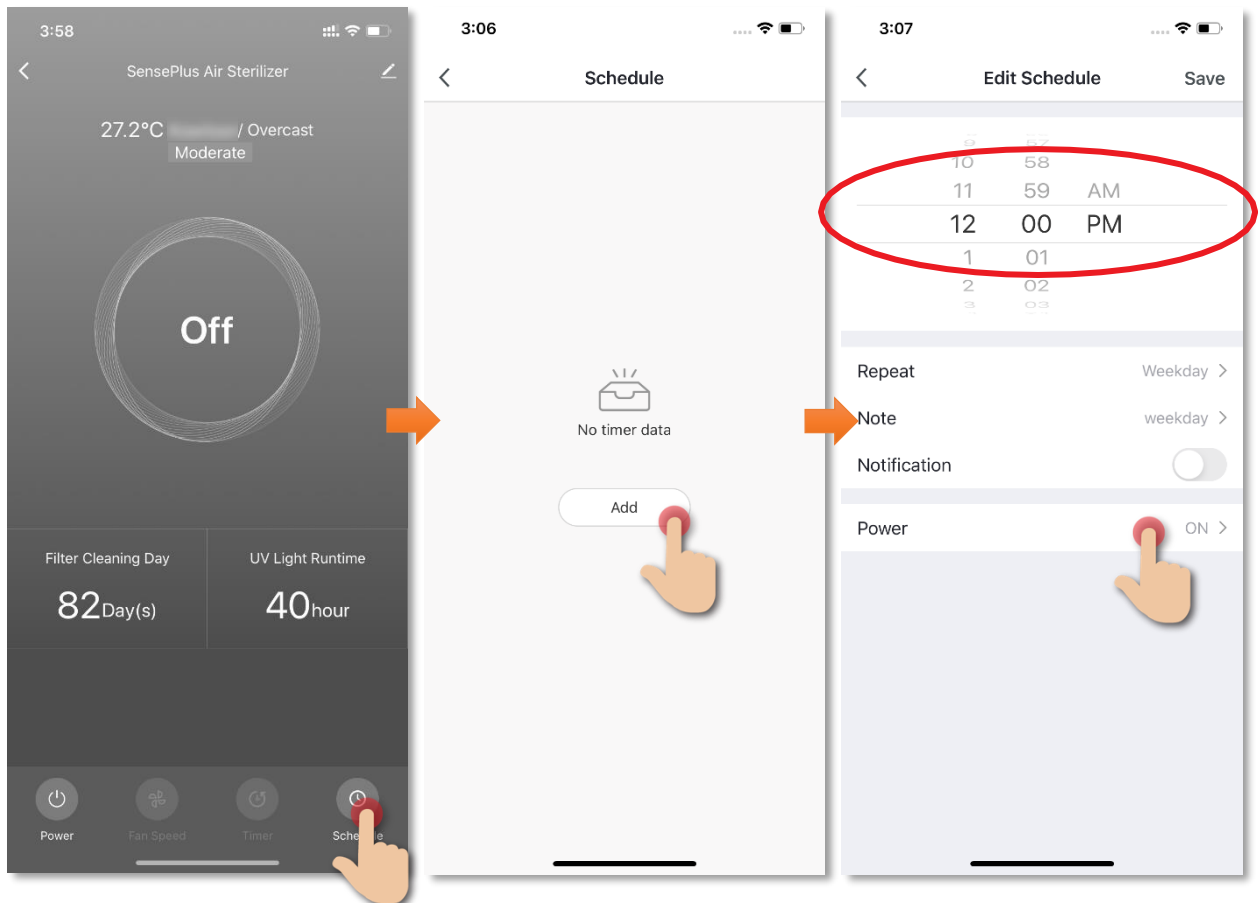
Tap “Timer” to set countdown timer to turn off your SensePlus Air Sterilizer automatically by choosing 1 hour, 4 hours or 8 hours.



## • Schedule

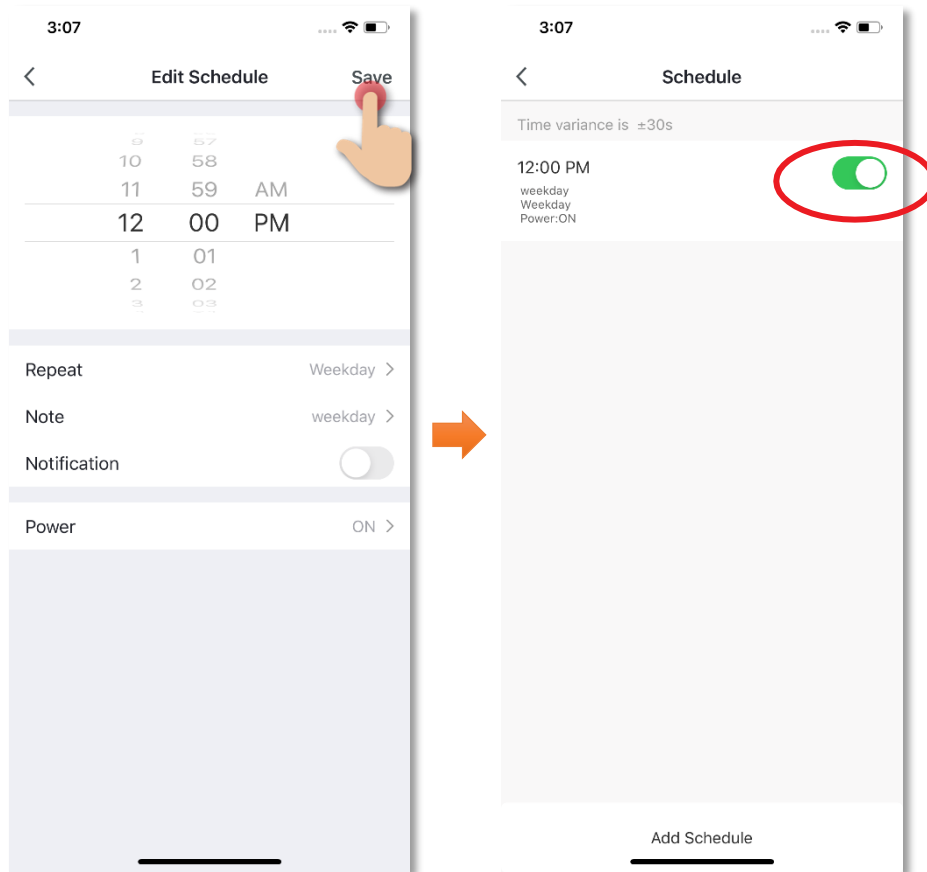
Tap “Schedule” to set schedule to turn on/off automatically:

1. Tap “Setting”;
2. Tap “Add”;
3. Set schedule to turn on/off the air sterilizer;

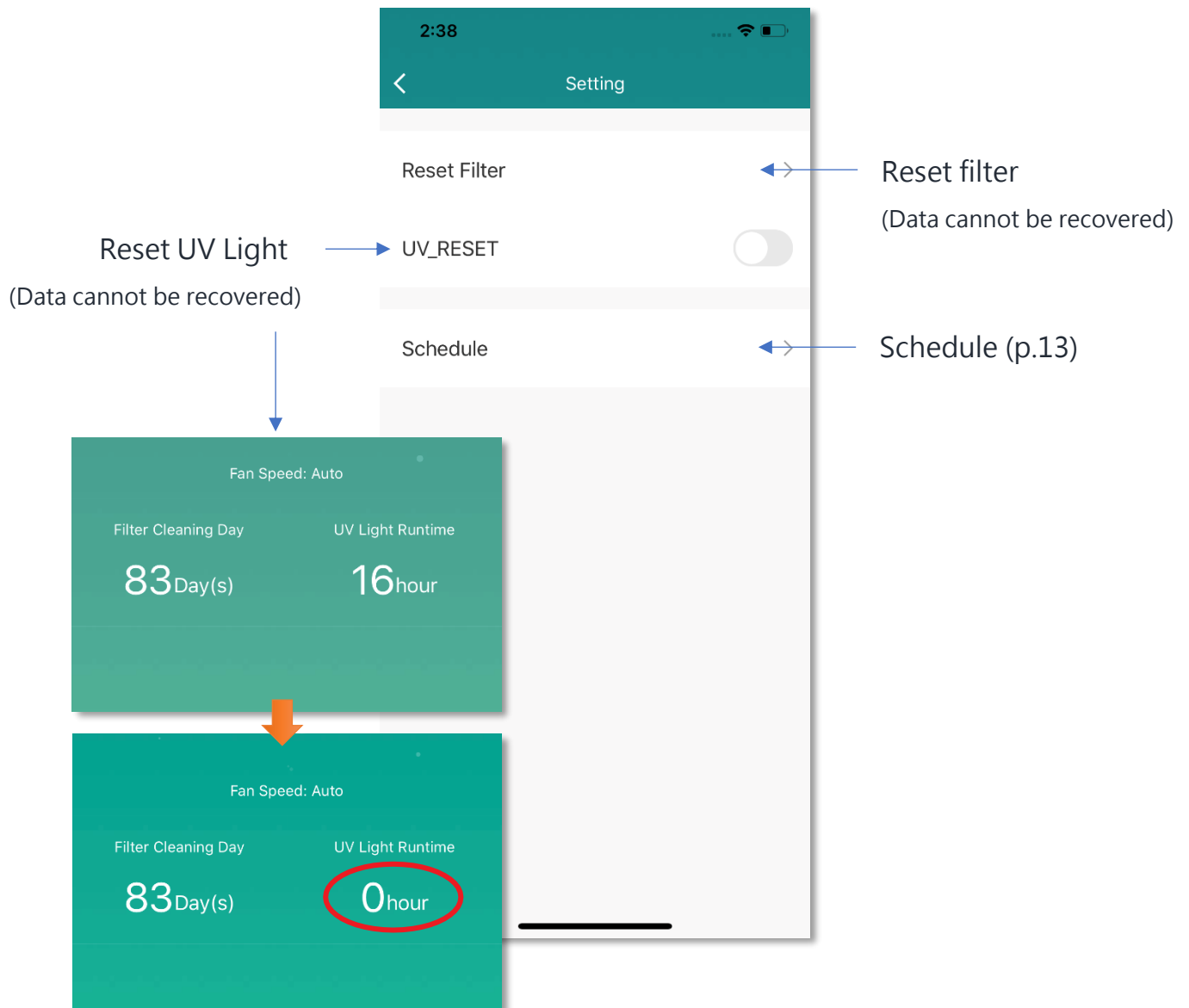




4. Save the schedule;
5. Tap the button to enable or disable the schedule.



- **Setting (Reset filter and UV light)**



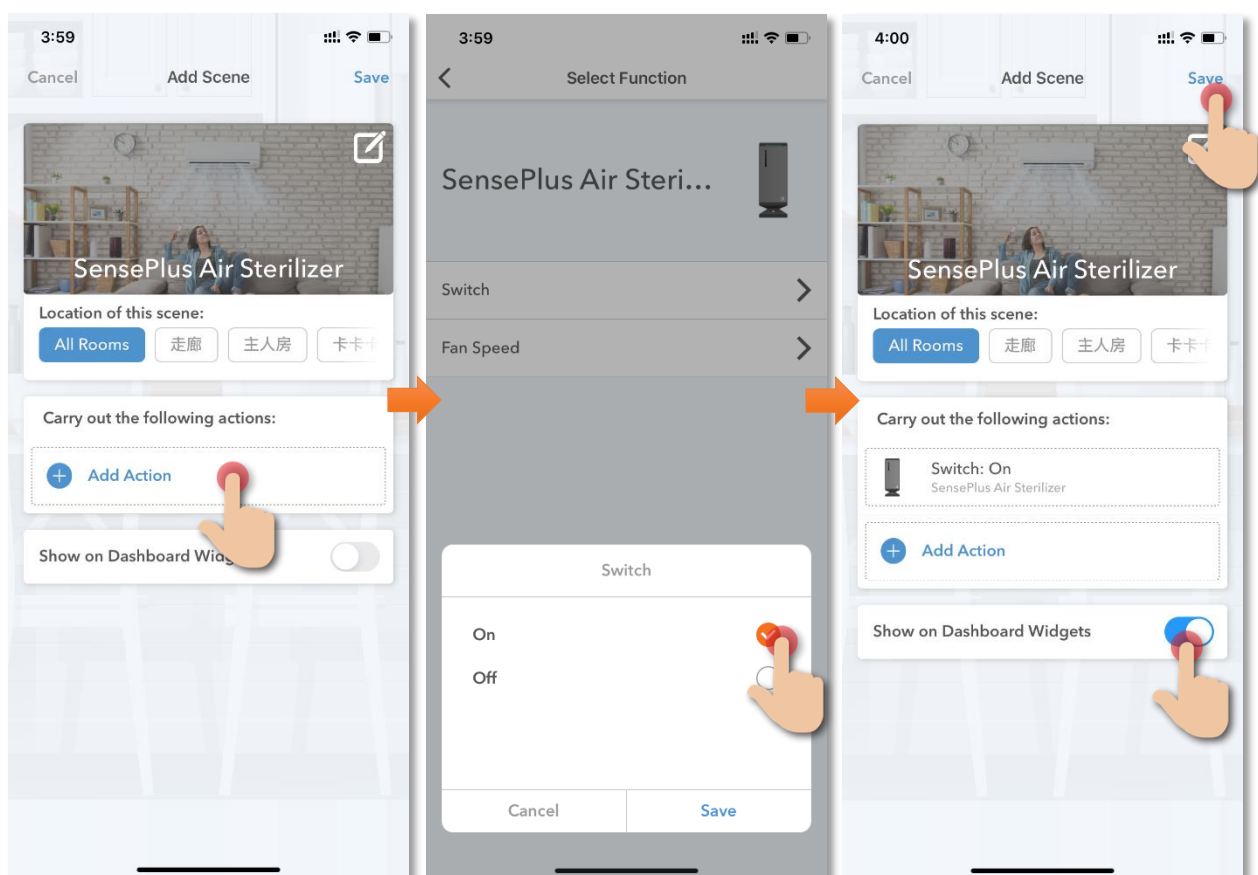
# Scene (Smart Action)

The integration of different smart devices is the beauty of smart home living which provides convenience and many possibilities of creating your preferred control settings. By setting SCENE, you can execute different smart devices at the same time by only one single tap. You can tailor make your unique scene such as movie time scene, welcome/back home scene, reading scene etc.

## User Voice Command to Turn On/Off SensePlus Air Sterilizer

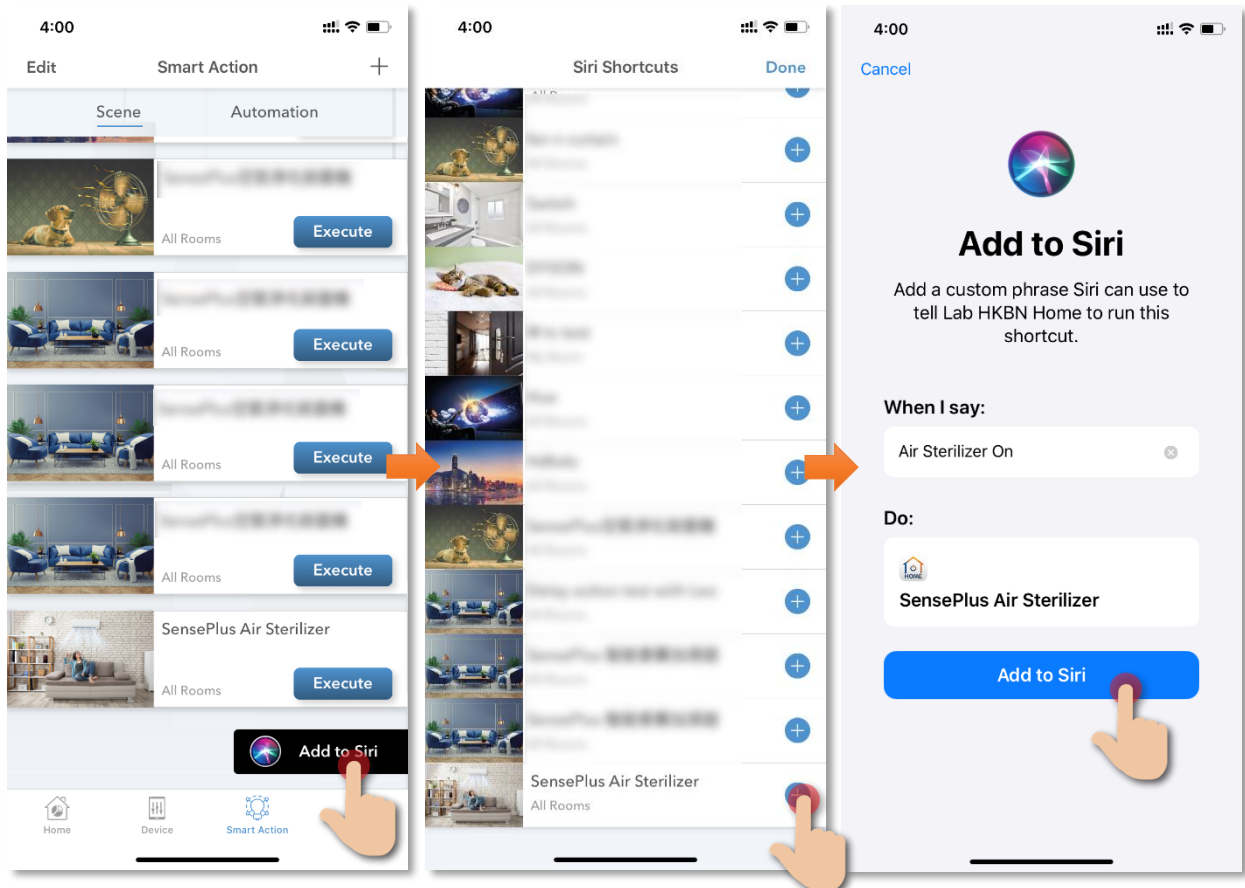
Instructions below explain how to create a Scene:

1. In "Smart Action" under the page of "Scene", tap "+" to add new Scene, and then tap "Add Action"
2. Select "SensePlus Air Sterilizer" and tap "Switch", and then select "On". (If turn off the Air Purifier then select "Off")
3. Tap to enable "Show on Dashboard Widgets", tap "Save" on the top right corner to complete



## How to add Siri Command into Scene:

1. In the page of "Scene", tap "Add to Siri"
1. In Siri Shortcuts, select the scene you would like to add Voice command
3. Input the voice command you want and then tap "Add to Siri" to complete



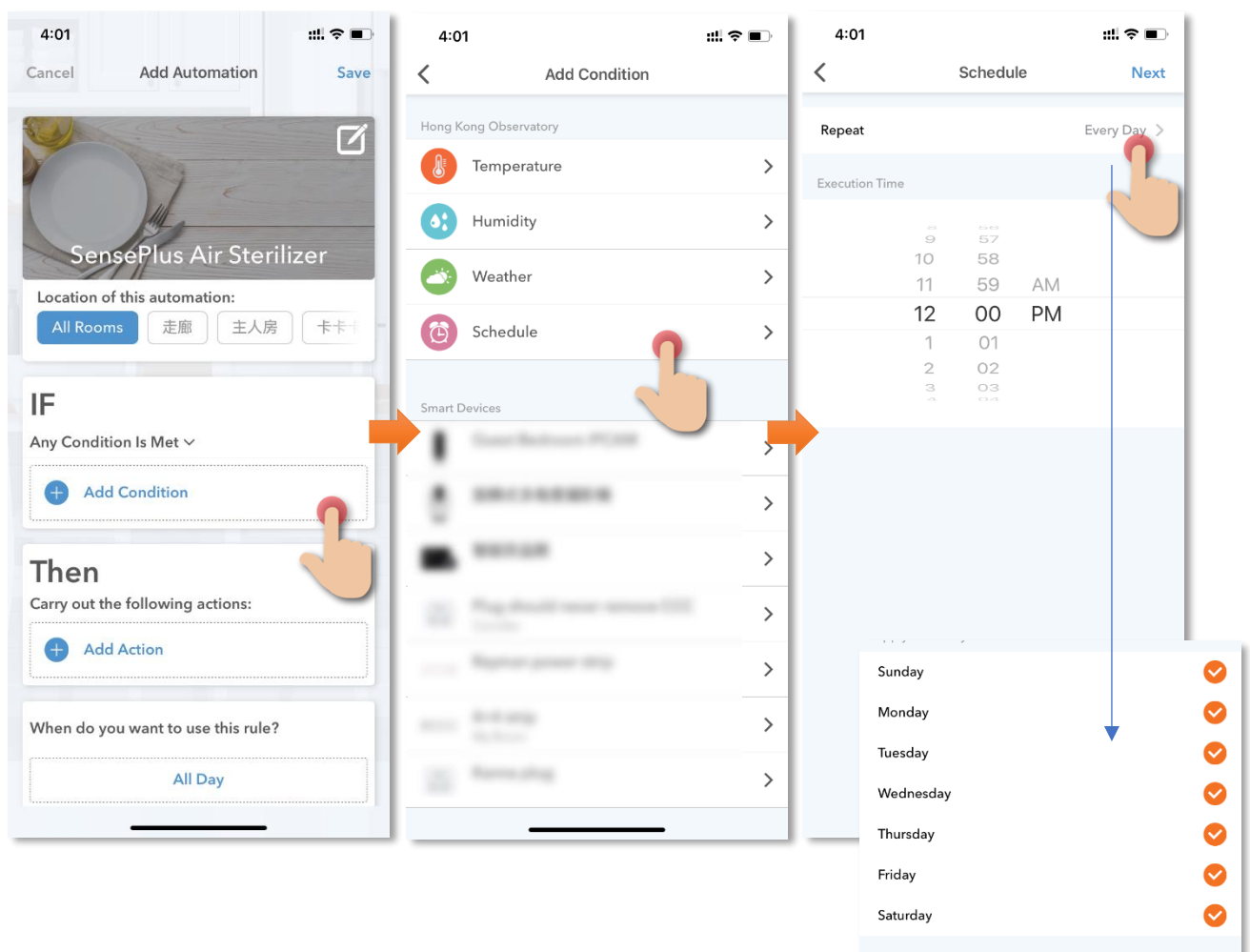
# Automation (Smart Action)

AUTOMATION can carry out device actions automatically by pre-conditions like environment factors or smart device status. You can handover this complex and important daily works to HKBN Smart for a convenient and simple living. Automation included the setting of Temperature, Humidity, Weather and Schedule as condition to trigger different control in smart devices. Below is the automation example of SensePlus Air Sterilizer:

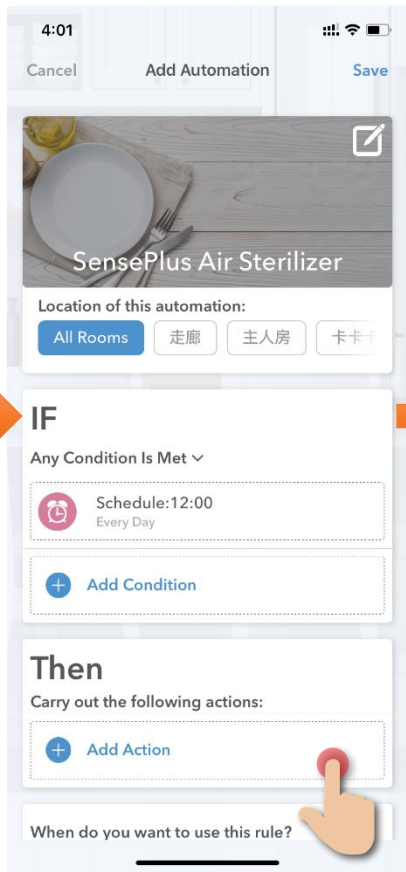
## Turn on SensePlus Air Sterilizer during 12:00PM

Instructions below explain how to create an Automation:

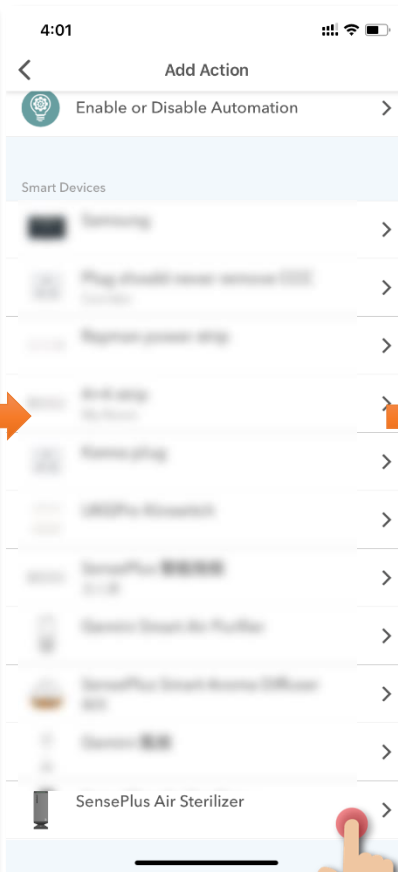
1. In "Smart Action" under the page of "Automation", tap "+" to add new Automation, and then tap "Add Condition"
2. Tap "Schedule"
3. Set the time at 7:00AM



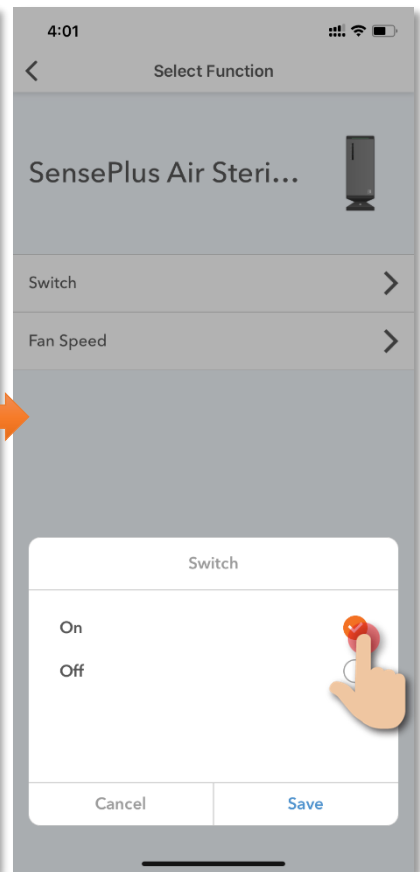
4. Tap "Add Action"



5. Select "SensePlus Air Sterilizer" .

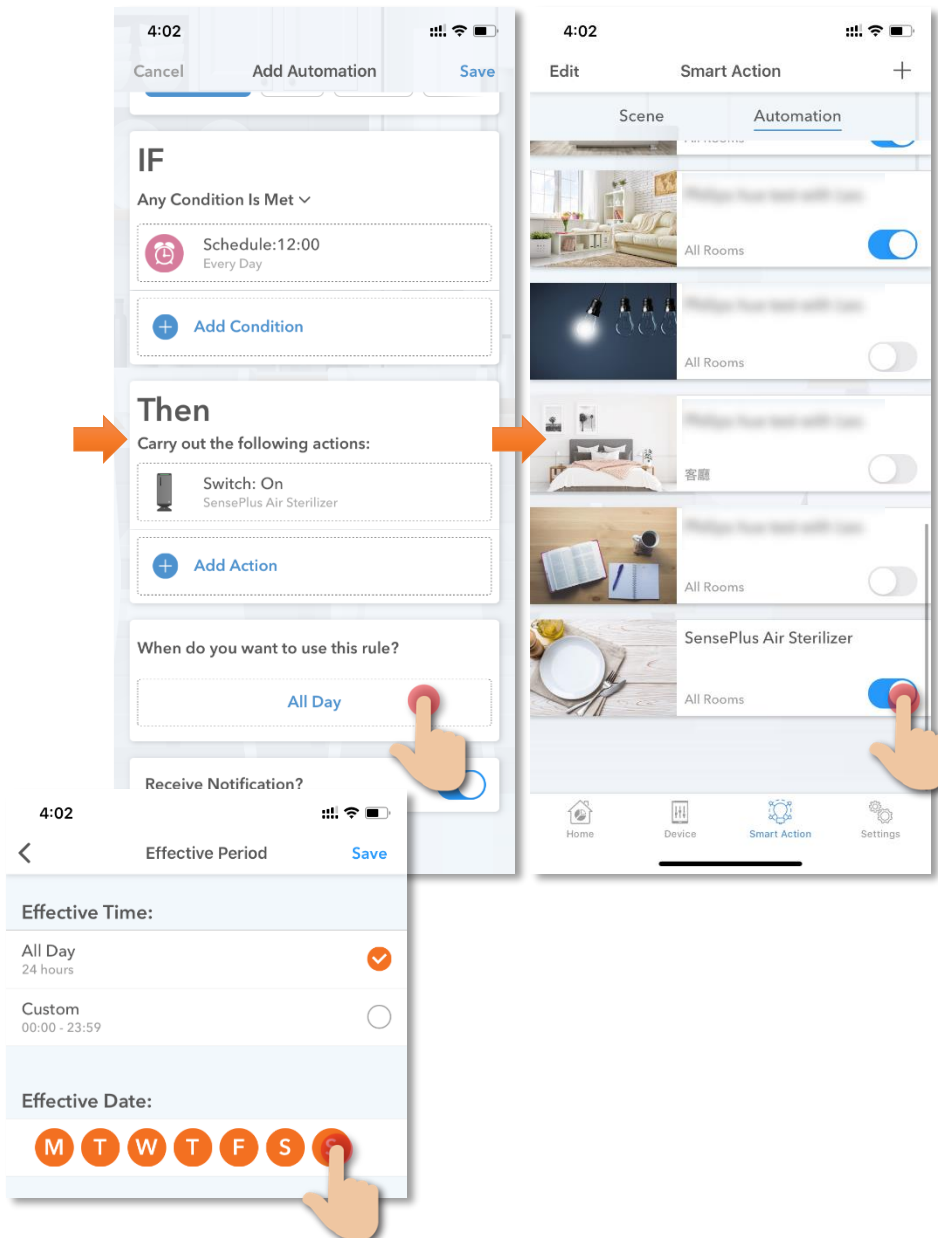


6. Set fan speed, then tap "On" in power



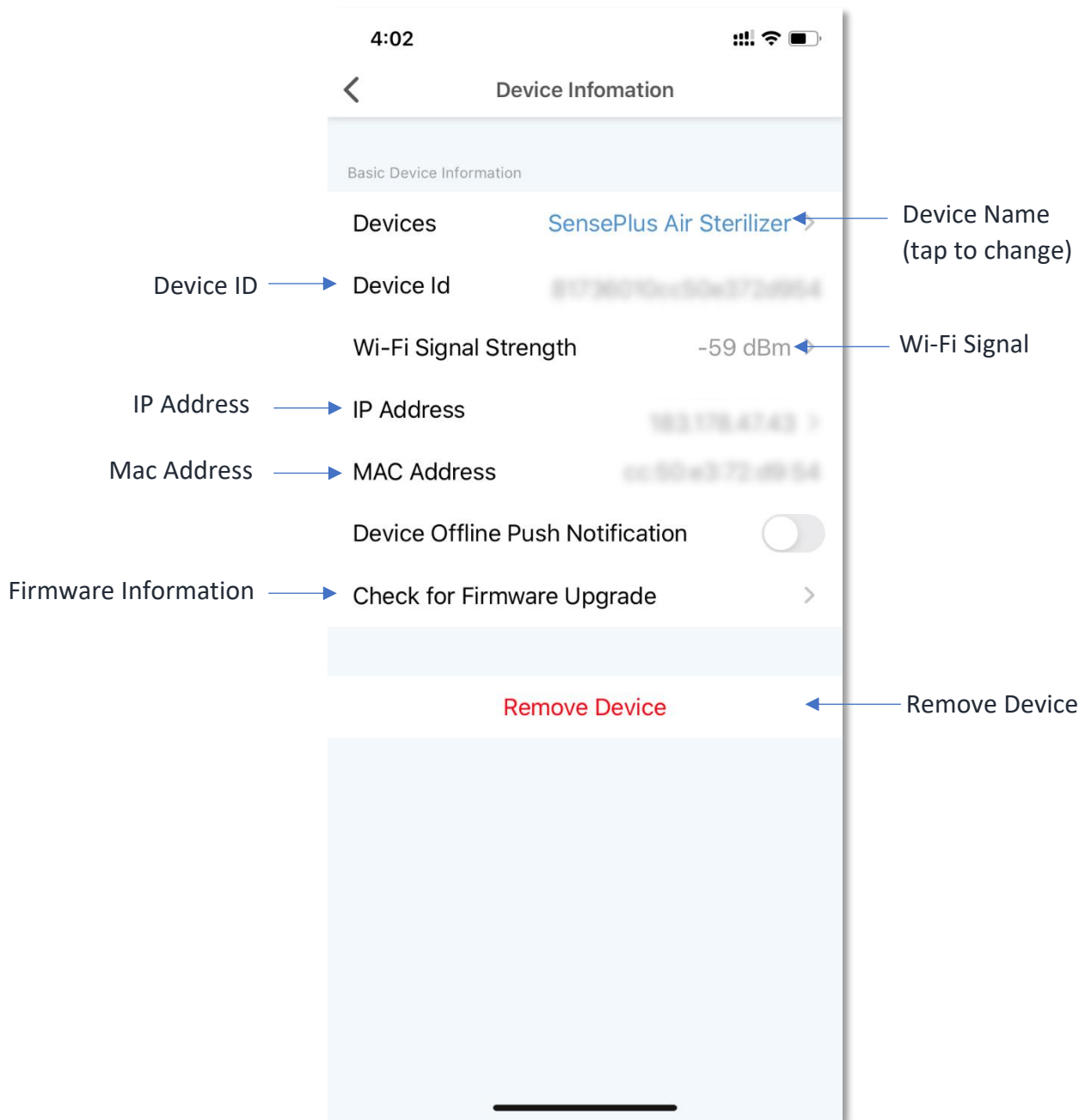
7. Select “All Day” to enable 24 hours or customize the effective period. (If the time is out of the effective period, the automation will not be triggered even if met the conditions)

8. Save to complete. In the page of automation, you can enable or disable automation



# Device Information

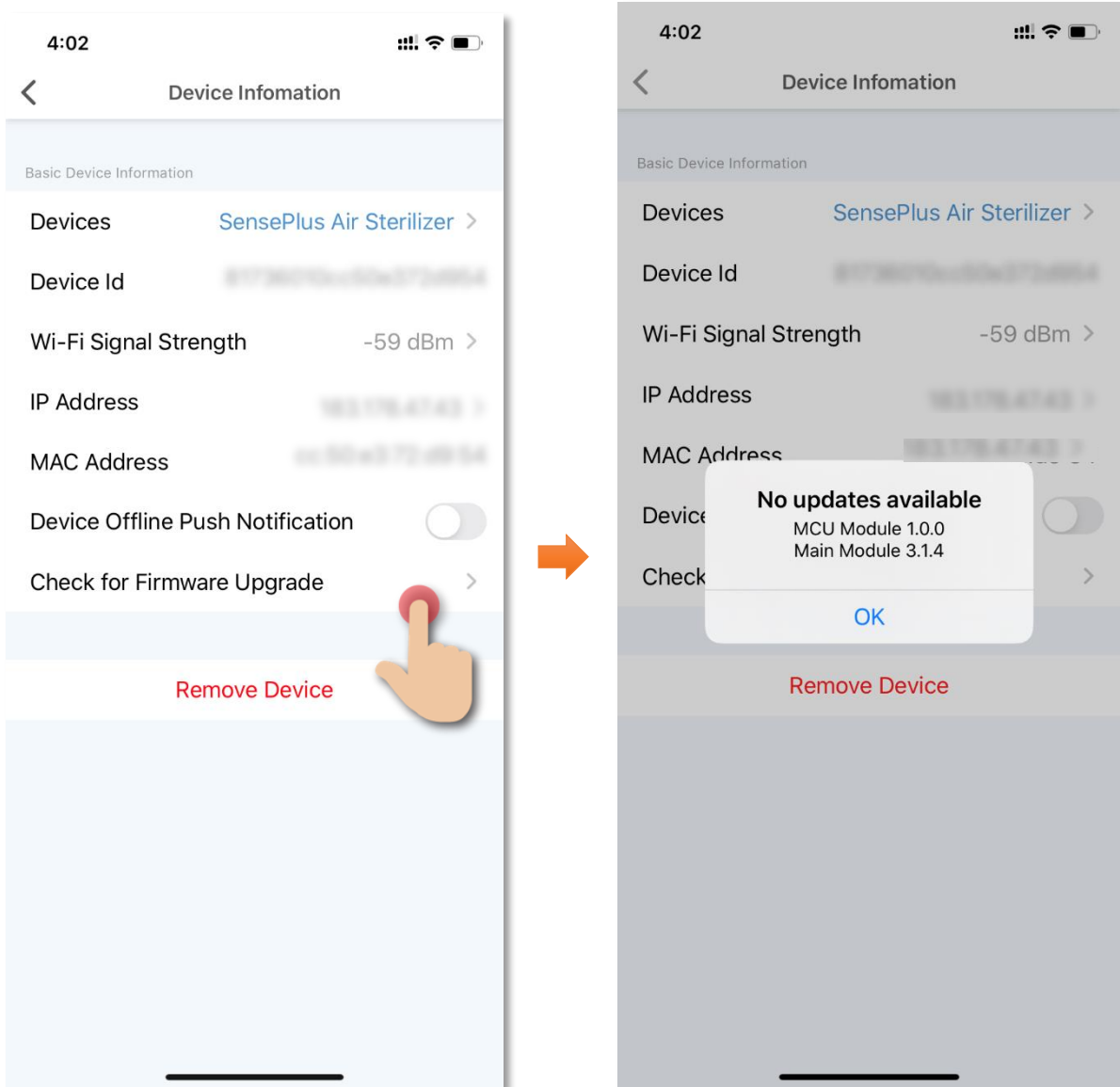
- Setting Page Panel





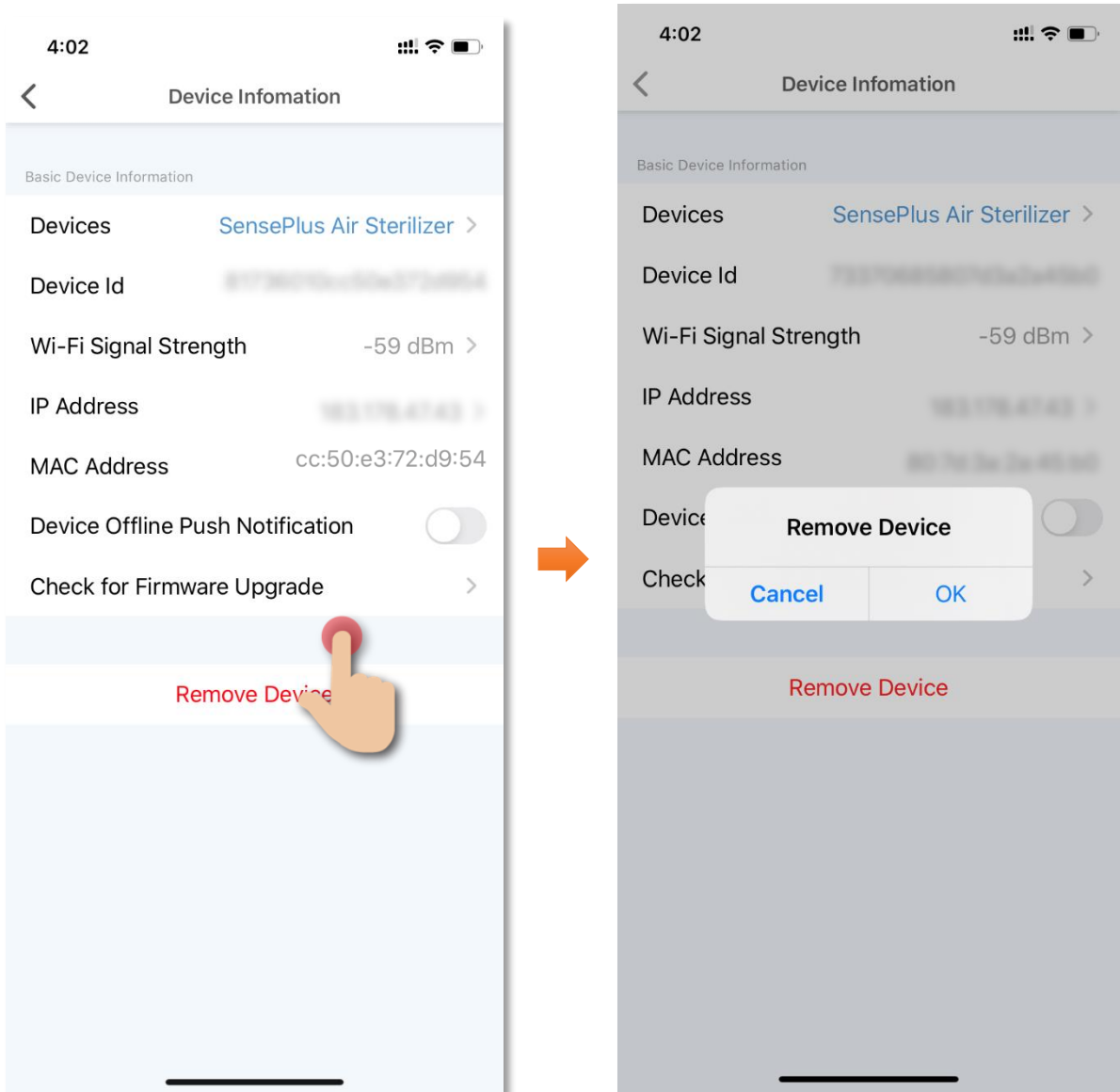
- **Check for Firmware Upgrade**

Tap “Check for Firmware Upgrade”, you can see current firmware version and available upgrade version if any. Tap “Upgrade” to start firmware upgrade



## • Remove Device

1. In device settings page, tap “Remove Device”;
2. Tap “OK” to confirm and remove device from your account.



# Product Specifications

- Compliance with: CE, RoHS
- Input Power: 120/240VAC
- Output: 12VDC 2A
- Wireless Standard: IEEE 802.11b/g/n, 2.4GHz
- Working Temperature: 4 - 50°C
- Noise: 35-56dB
- Coverage Area: 33.8 square meter (375 square feet)
- UV Bulb Life: 8000hrs
- Filtration System: PNPO® (Pressurized Nano Photocatalytic Oxidation)
- Filter: PNPO® stainless steel 304
- Product Dimensions: 160 x 160 x 415mm
- Weight: 3.4kg

# Product Maintenance and Warranty

For the enquiry of product maintenance and warranty, please contact the product distributor/ manufacturer below:

## Maxisense IoTech Limited

- Service Center : Room 1010, Peninsula Tower, 538 Castle Peak Road, Cheung Sha Wan, Kowloon, Hong Kong
- Tel. : (852) 3500 8222
- Email : [info@Maxisense.io](mailto:info@Maxisense.io)
- Working Hour : (Monday to Friday) 9:30am - 12:30pm, 2:00pm - 6:00pm (No service on Saturday, Sunday and Public Holiday)

If you would like to check the device on the same day, please call to make an appointment to avoid long waiting time.

Just in case the hotline is busy, please leave a voice message and your enquiry will be responded to as soon as possible.

Should you have any query, please call our Customer Service Hotline at 3492 0110.