



# SensePlus Smart Plug

(Model : MX-PP-01S)

## HKBN Smart User Guide



v.20210923

## Table of Contents

Product Description .....	3
Download HKBN Smart App.....	4
Add Device.....	5
Control Device .....	9
Scene (Smart Action) .....	14
Automation (Smart Action) .....	16
Device Information .....	19
FAQ.....	22
Specifications.....	23
Product Maintenance and Warranty .....	24

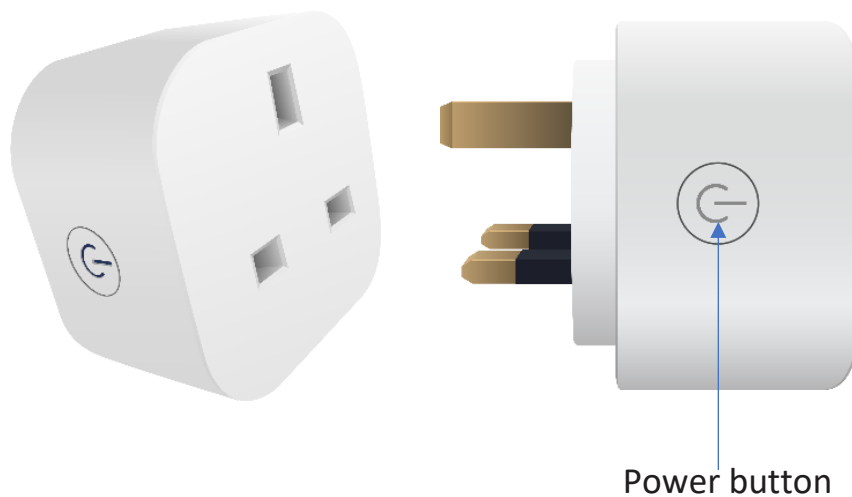
# Product Description

Name : SensePlus Smart Plug

Model : MX-PP-01S

Features:

1. Instantly turn connected devices on/off wherever you are
2. Create schedules/timers to automatically manage devices
3. Compliance with: CE, RoHS, BS 1363-3, EN 60669



# Download HKBN Smart App



Search and download “HKBN Smart”  
APP in Apple App Store OR Google  
Play Store

OR

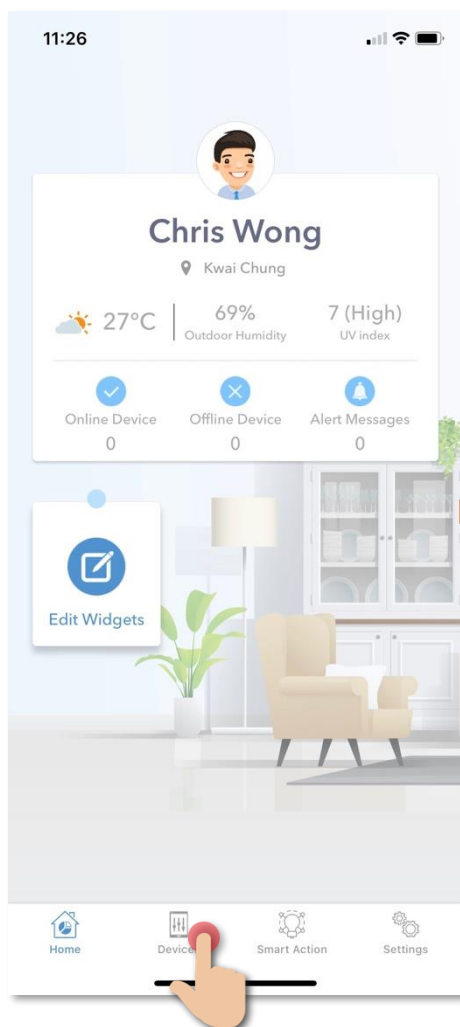
Scan the QR code below



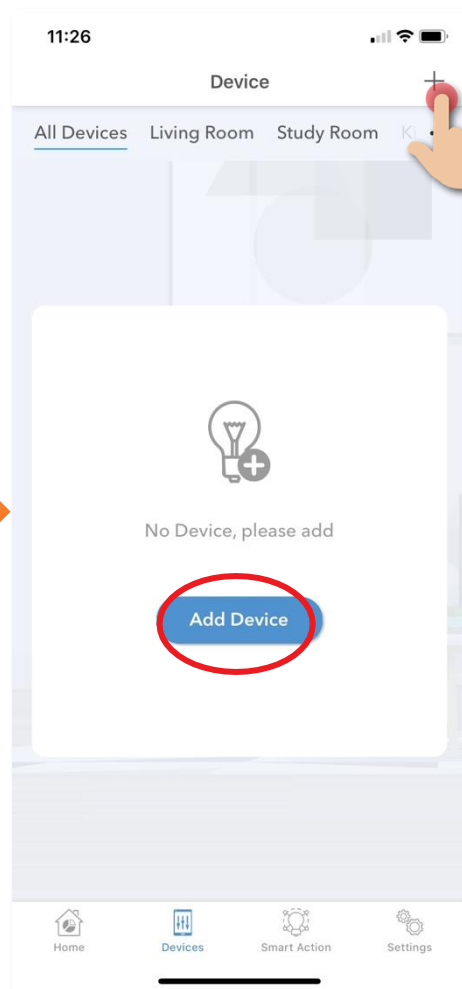
# Add Device

1. You must first connect your phone to a 2.4GHz Wi-Fi network when adding device;
2. Tap “Devices” on the bottom menu; (image 1)
3. Tap “Add Device” button OR “+” icon at top right corner if you already have paired device; (image 2)

(image 1)



(image 2)

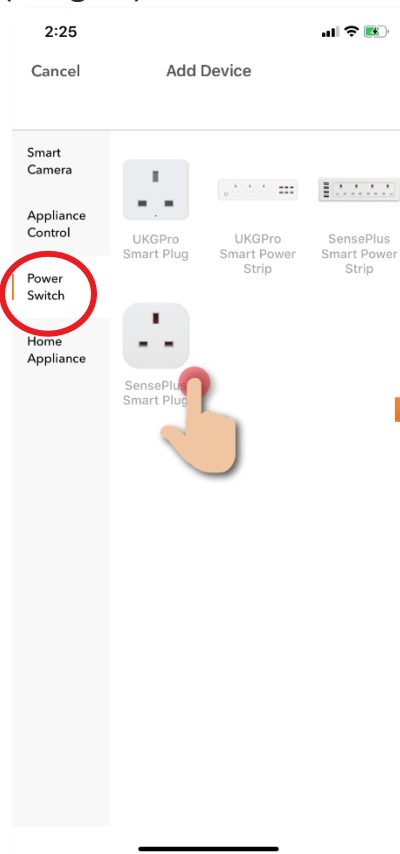


# Add Device

4. Tap “SensePlus Smart Plug” from left menu “Power Switch” (image 3);
5. Connect power and the Power button indicator will blink fast. (Blink twice per second).

If the indicator is not blinking, hold the POWER button for 5 seconds until the indicator is blinking fast. (image 4)

(image 3)



(image 4)



(image 5)



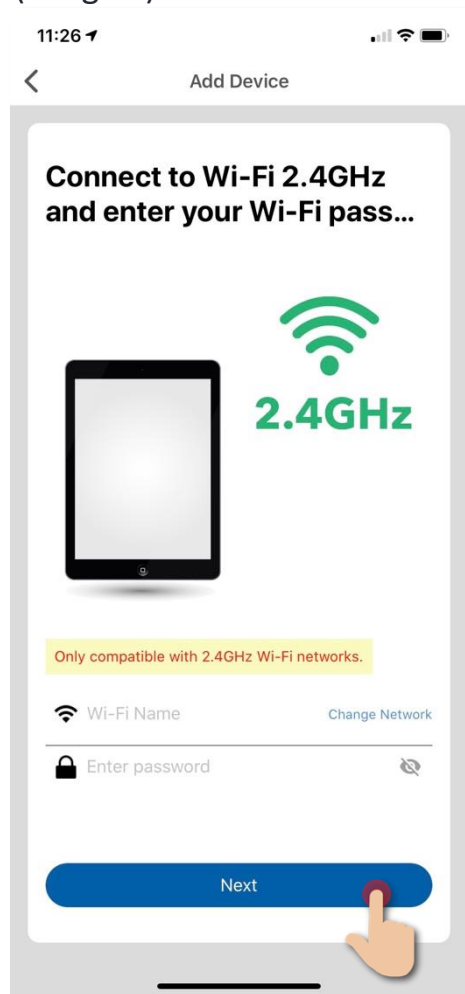
# Add Device

6. Select 2.4GHz Wi-Fi network and enter password\*, and then tap “Next”. (image 6)
7. Please wait a moment while your device is in pairing process. (image 7)

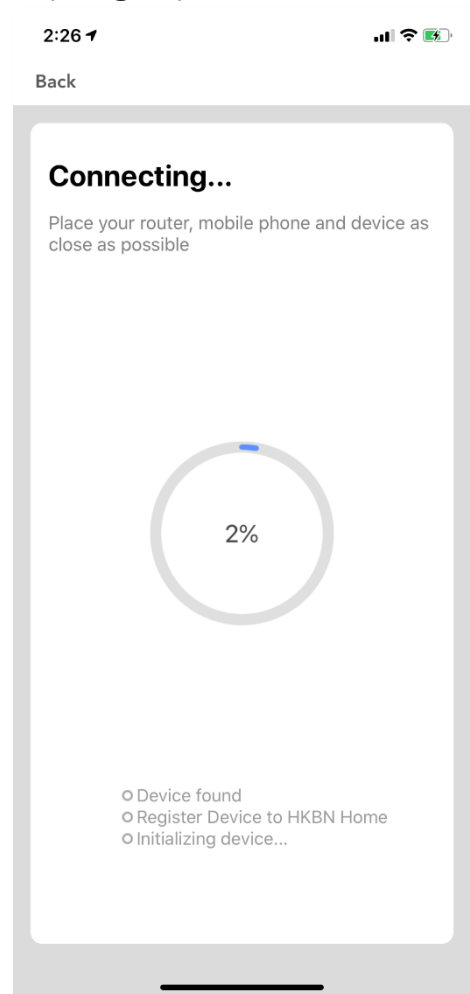
## \*Important tips: Wi-Fi requirement

- Currently all smart devices are compatible to **2.4GHz network** only. Please make sure that your device and mobile are connected with 2.4GHz but not 5GHz Wi-Fi network.
- If you have 2.4GHz and 5GHz Wi-Fi channel and they are using same SSID, we suggest to edit it to different name before pairing. If you insist to use the same SSID on two channels, please turn off the 5GHz channel first before pairing.

(image 6)

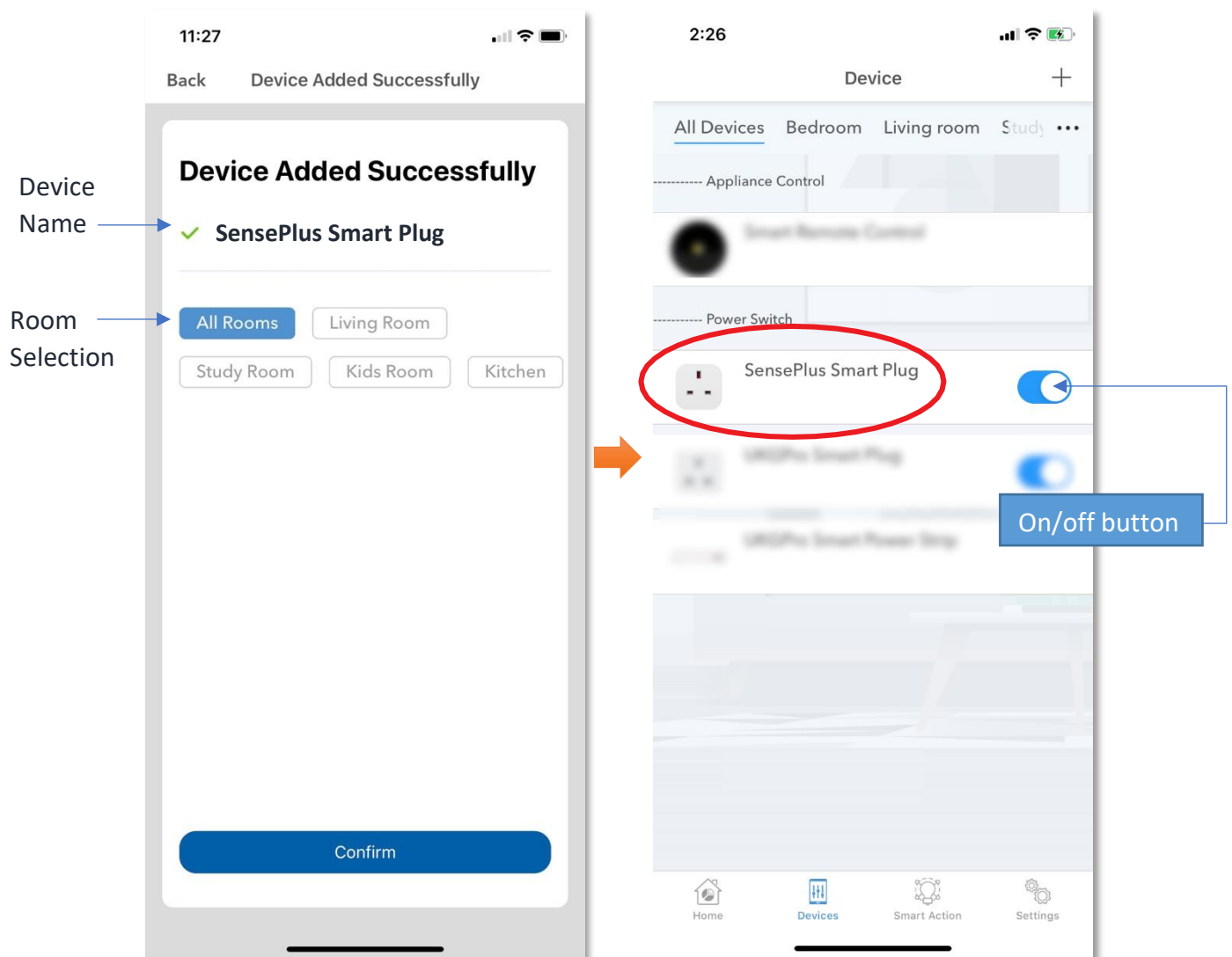


(image 7)



# Add Device

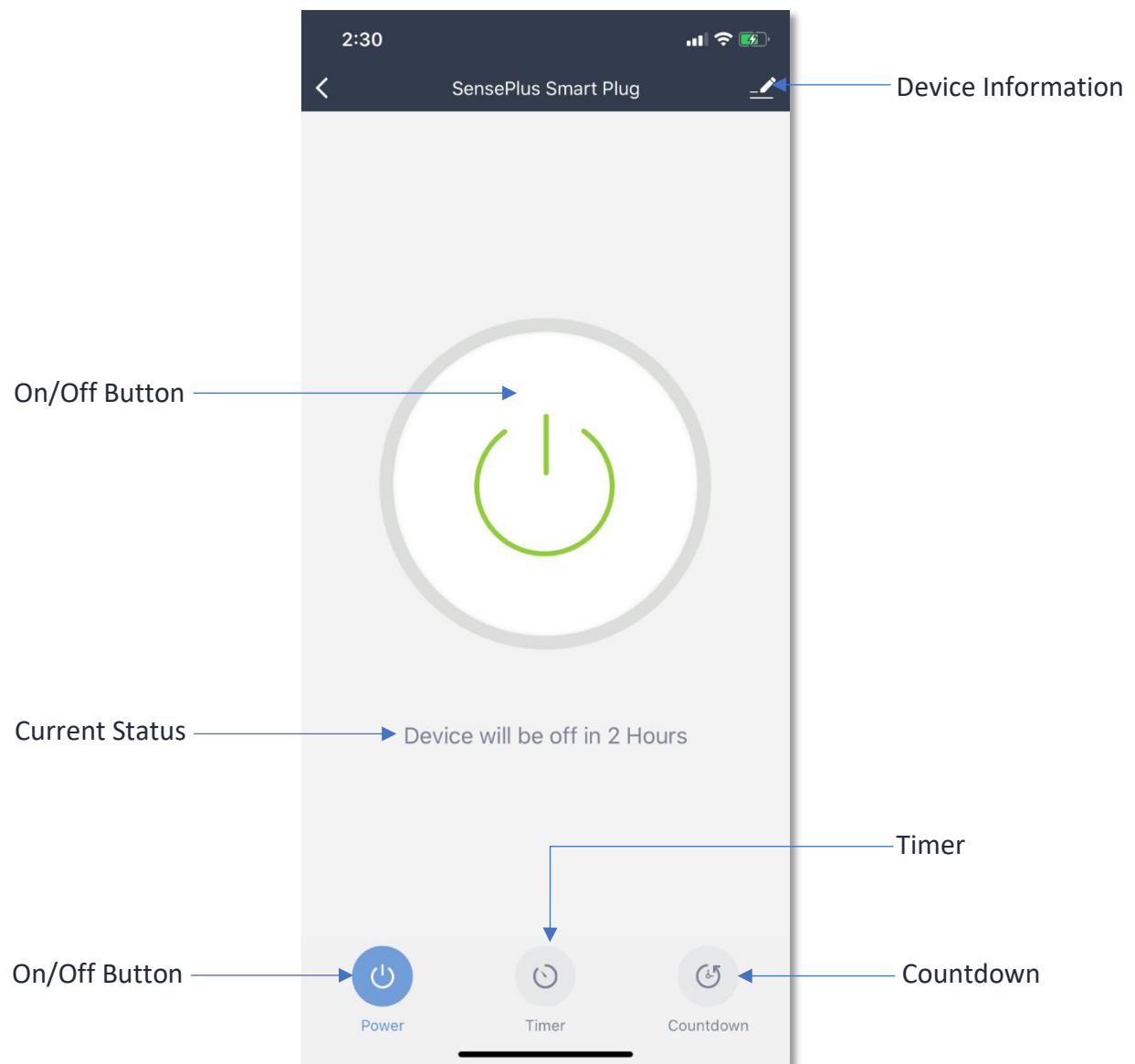
8. After device added successfully, you can change the device name and assign it to the located room. (You can also change the device name and room location later in device setting page and room management page.) And you can find the “SensePlus Smart Plug” in the “Device” page.





# Control Device

- Introduction of Control Panel

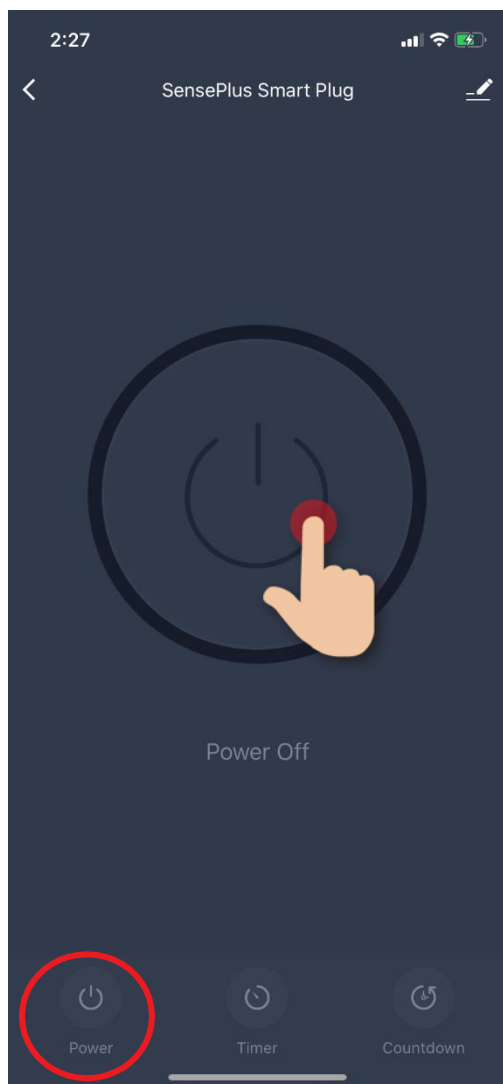


# Control Device

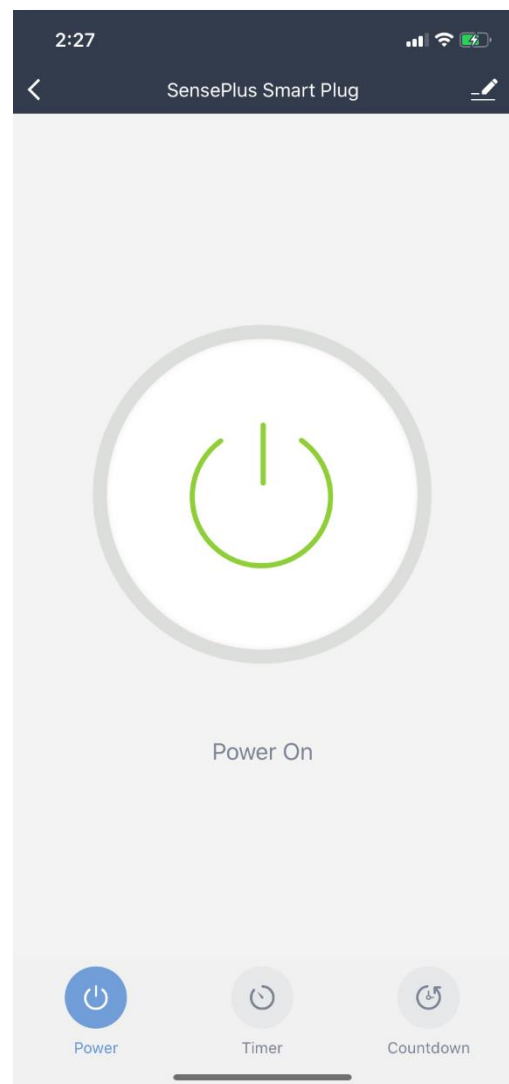
- **Switch On/Off**

You can remotely switch the smart plug on or off by pressing the power icon or from the bottom “Power” button. Under the power icon, it will show the current status of the power plug (image 1).

(image 1)



(image 2)



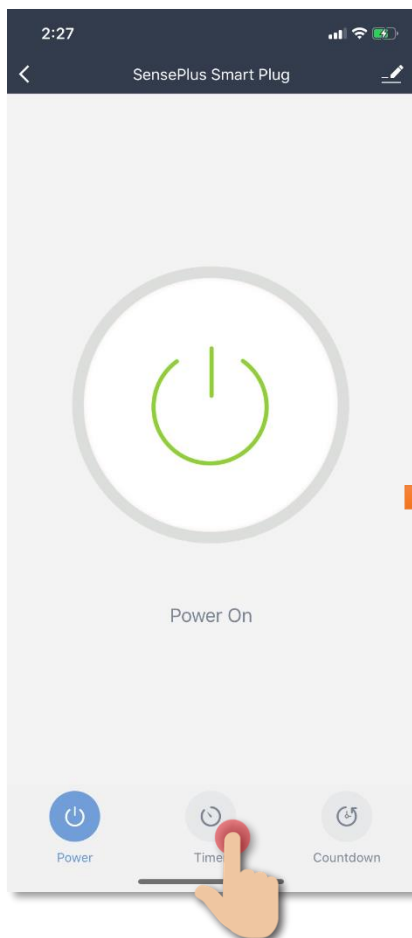
# Control Device

- **Timer**

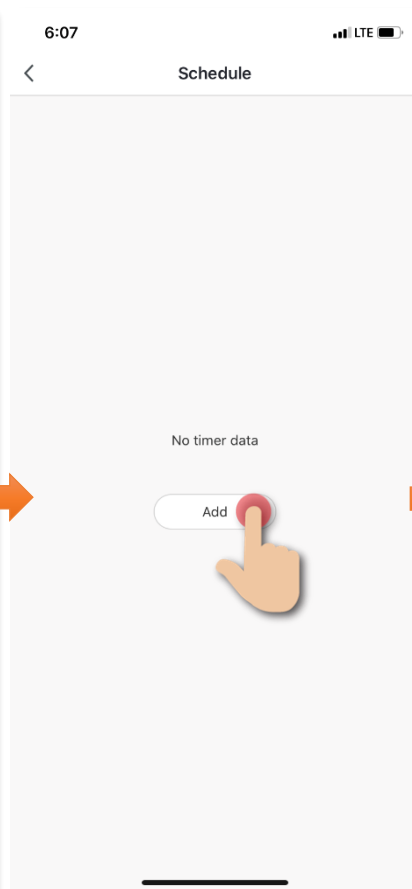
You can set timer to switch on or off your power plug automatically:

1. Tap “Timer” (image 1);
2. Tap “Add” (image 2);
3. Set time for automation (image 3);

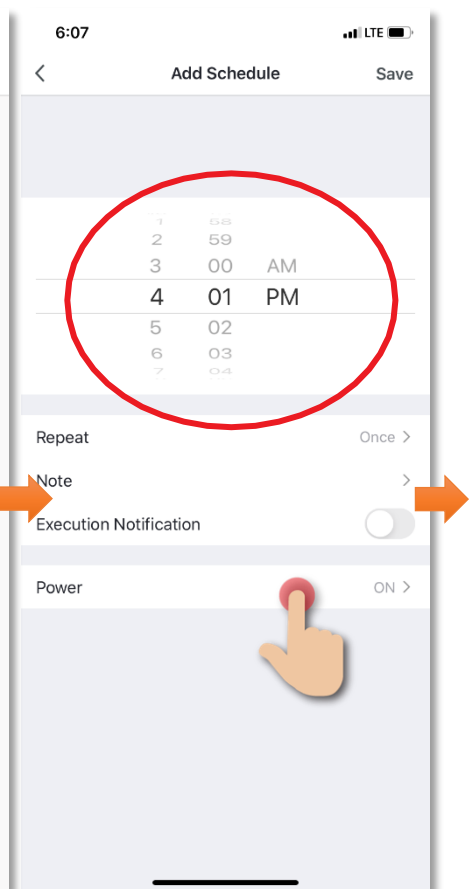
(image 1)



(image 2)

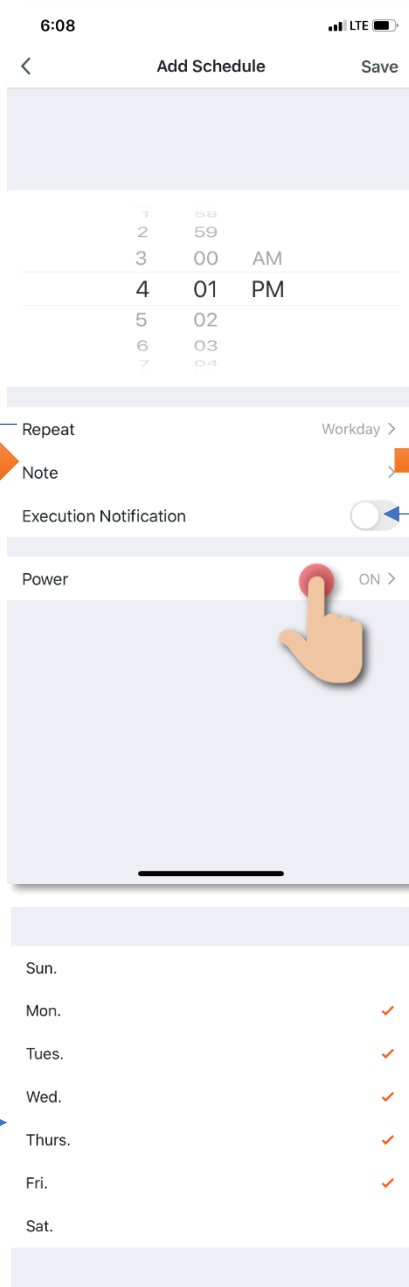


(image 3)

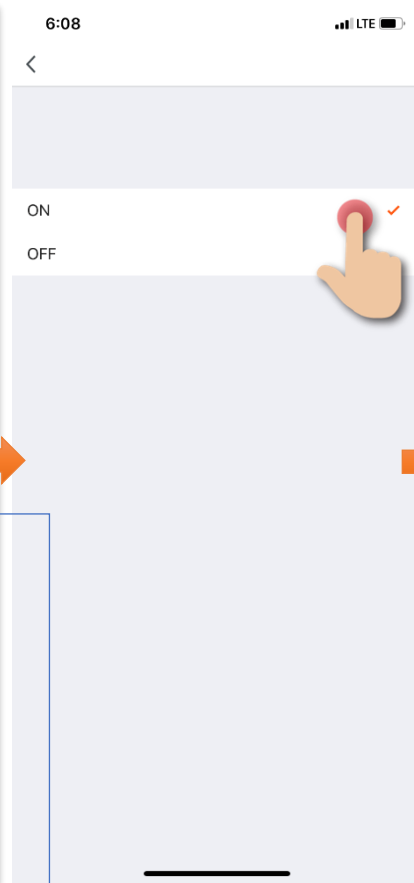


4. Set repeated schedule in which day of the week (image 4);
5. Select “On” or “Off” (image 5);
6. Tap the button to enable or disable this schedule (image 6).

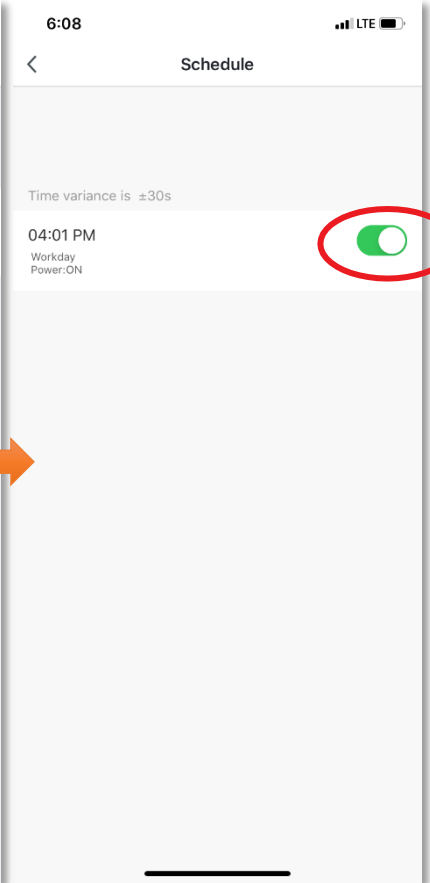
(image 4)



(image 5)



(image 6)



This function is currently not available. If you need execution notification, you can use the schedule function in Smart Action (Automation) and enable alert notification in your automation setting.

「 Repeat 」 : You can enable this schedule on any day of the week.

# Control Device

- **Countdown**

You can set countdown time to switch on or off your power plug automatically:

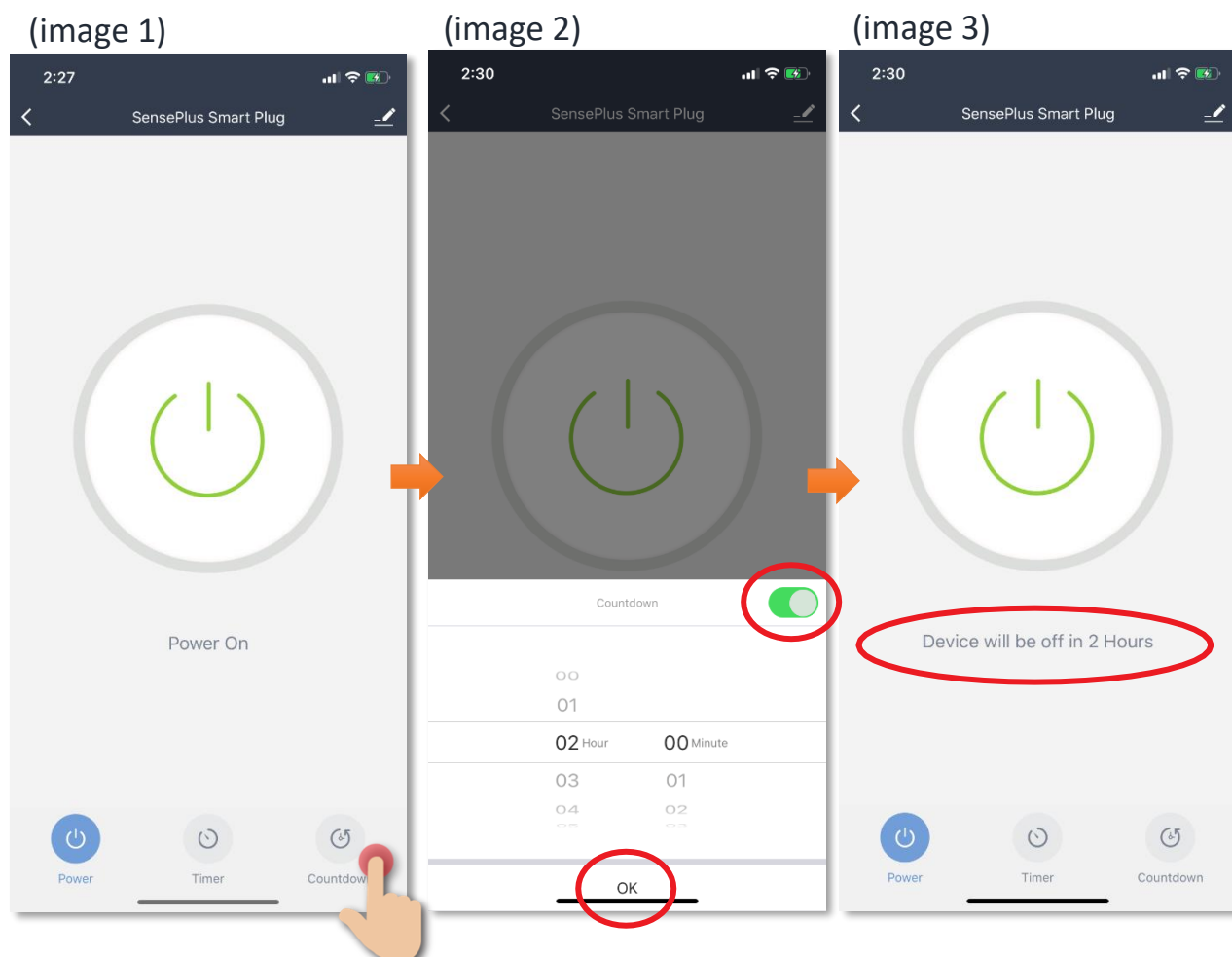
**When Plug is ON:** After setup countdown time, main panel will display the remaining time of switching OFF the power plug automatically.

(image 3)

**When Plug is OFF:** After setup countdown time, main panel will display the remaining time of switching ON the power plug automatically.

(image 3)

**Cancel countdown:** To cancel running countdown, tap “countdown” button and then switch it off by the button on right top corner, and then press “OK” button on the bottom. (image 2)



# Control Device

## Scene (Smart Action)

The integration of different smart devices is the beauty of smart home living which provides convenience and many possibilities of creating your preferred control settings. By setting SCENE, you can execute different smart devices at the same time by only one single tap. You can tailor make your unique scene such as movie time scene, welcome/back home scene, reading scene etc.

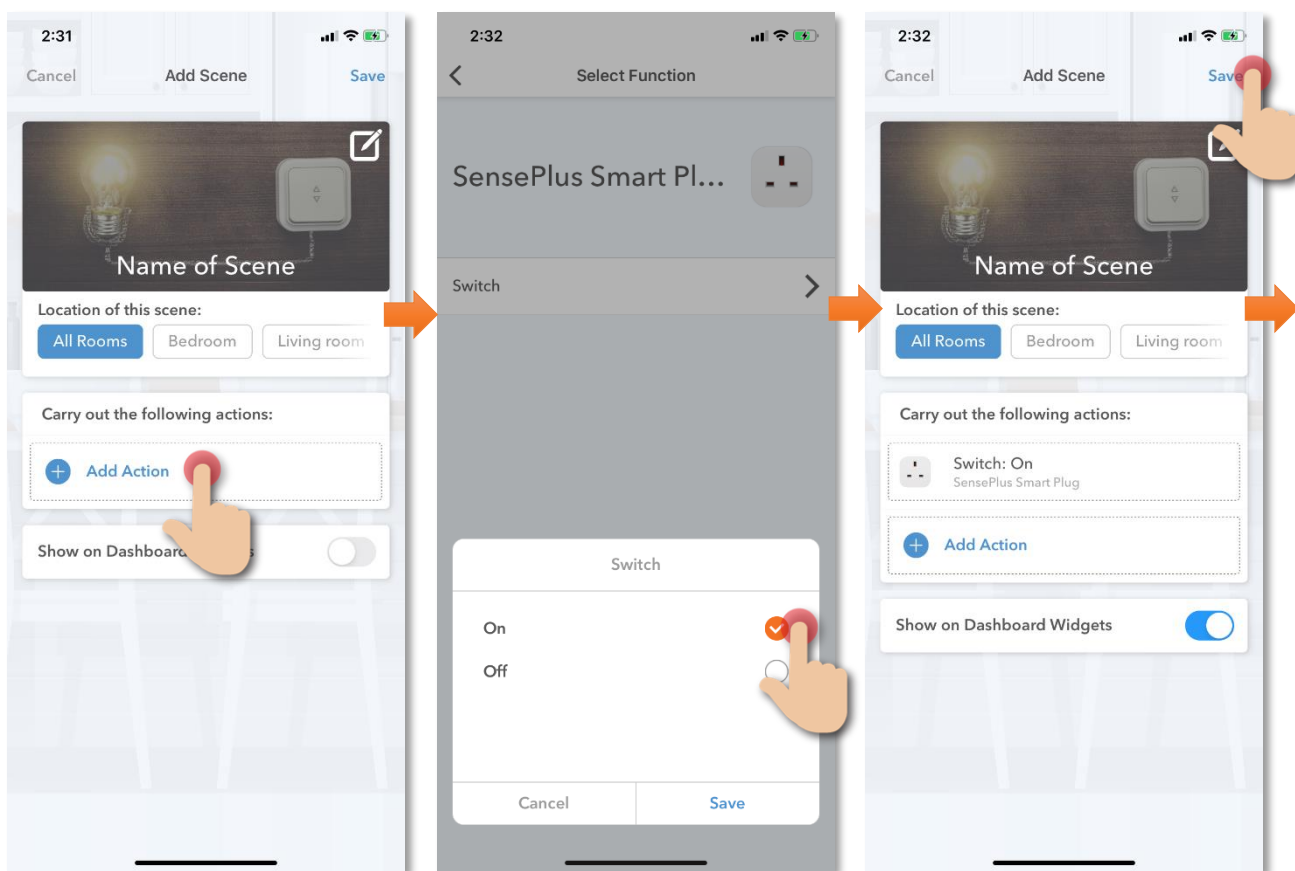
## Use Voice Command to switch On or Off power plug

Instructions below explain how to create a Scene:

1. In "Smart Action" under the page of "Scene", tap "+" to add new Scene, and then tap "Add Action"

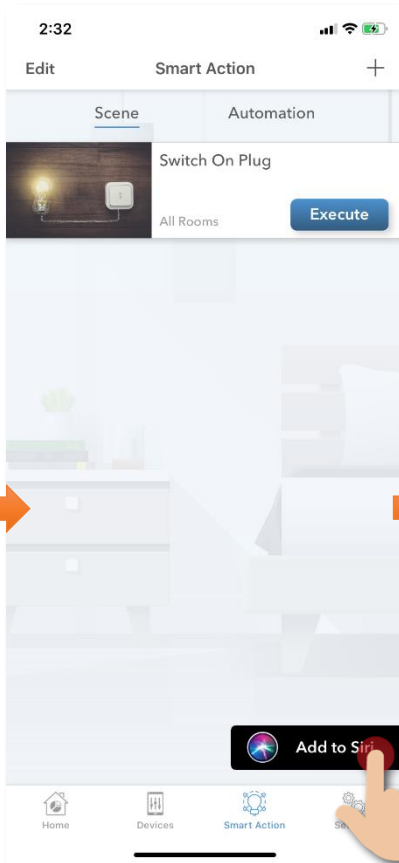
2. Select "SensePlus Smart Plug" and tap "Switch", and then select "On". (If switch off the plug then select "Off")

3. Tap to enable "Show on Dashboard Widgets", tap "Save" on the top right corner to complete



## How to add Siri Command into Scene:

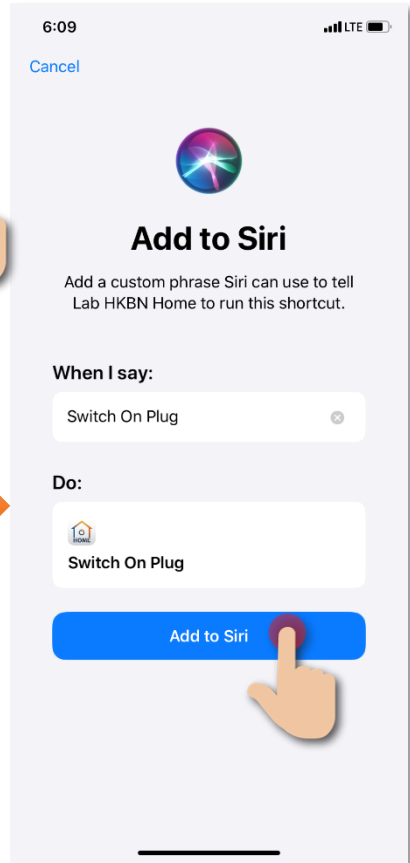
1. In the page of "Scene", tap "Add to Siri"



2. In Siri Shortcuts, select the scene you would like to add Voice command



3. Input the voice command you want and then tap "Add to Siri" to complete



# Control Device

## Automation (Smart Action)

AUTOMATION can carry out device actions automatically by pre-conditions like environment factors or smart device status. You can handover this complex and important daily works to HKBN Smart for a convenient and simple living. Automation included the setting of Temperature, Humidity, Weather and Schedule as condition to trigger different control in smart devices. Below is the automation example of Fan and Air-Conditioner (Require infrared Remote Control):

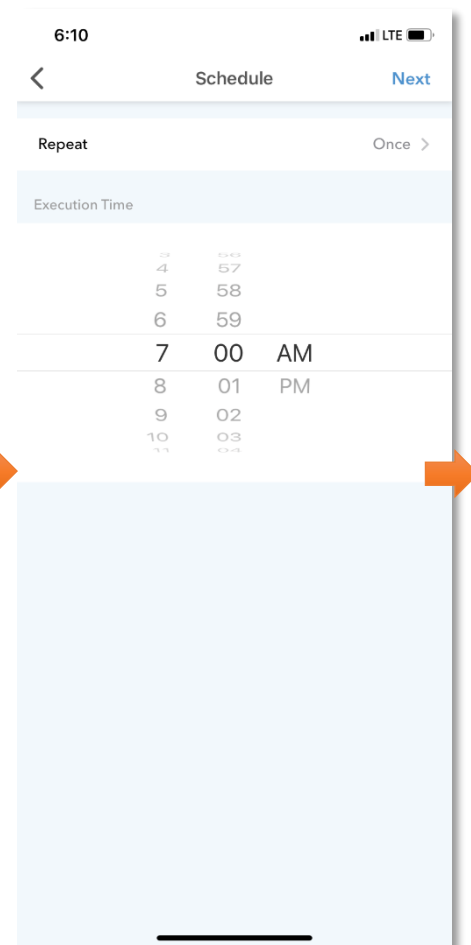
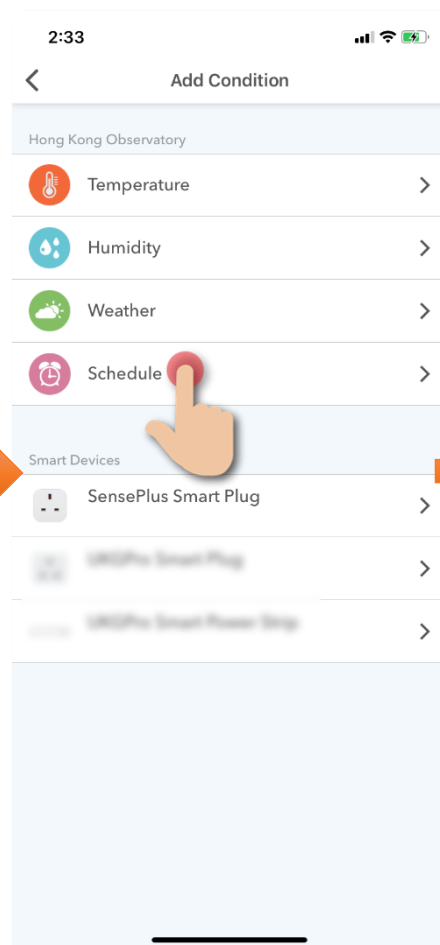
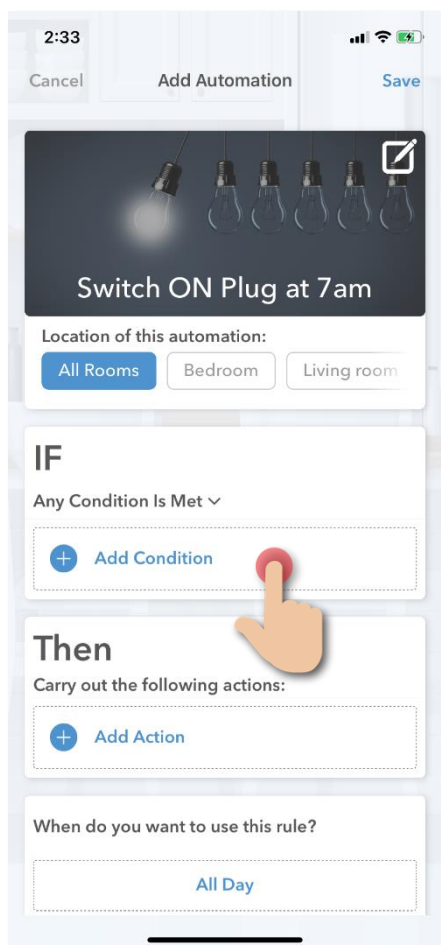
### Automatically turn on power plug at 7am

Instructions below explain how to create an Automation:

1. In "Smart Action" under the page of "Automation", tap "+" to add new Automation, and then tap "Add Condition"

2. Tap "Schedule"

3. Set the time at 7:00am

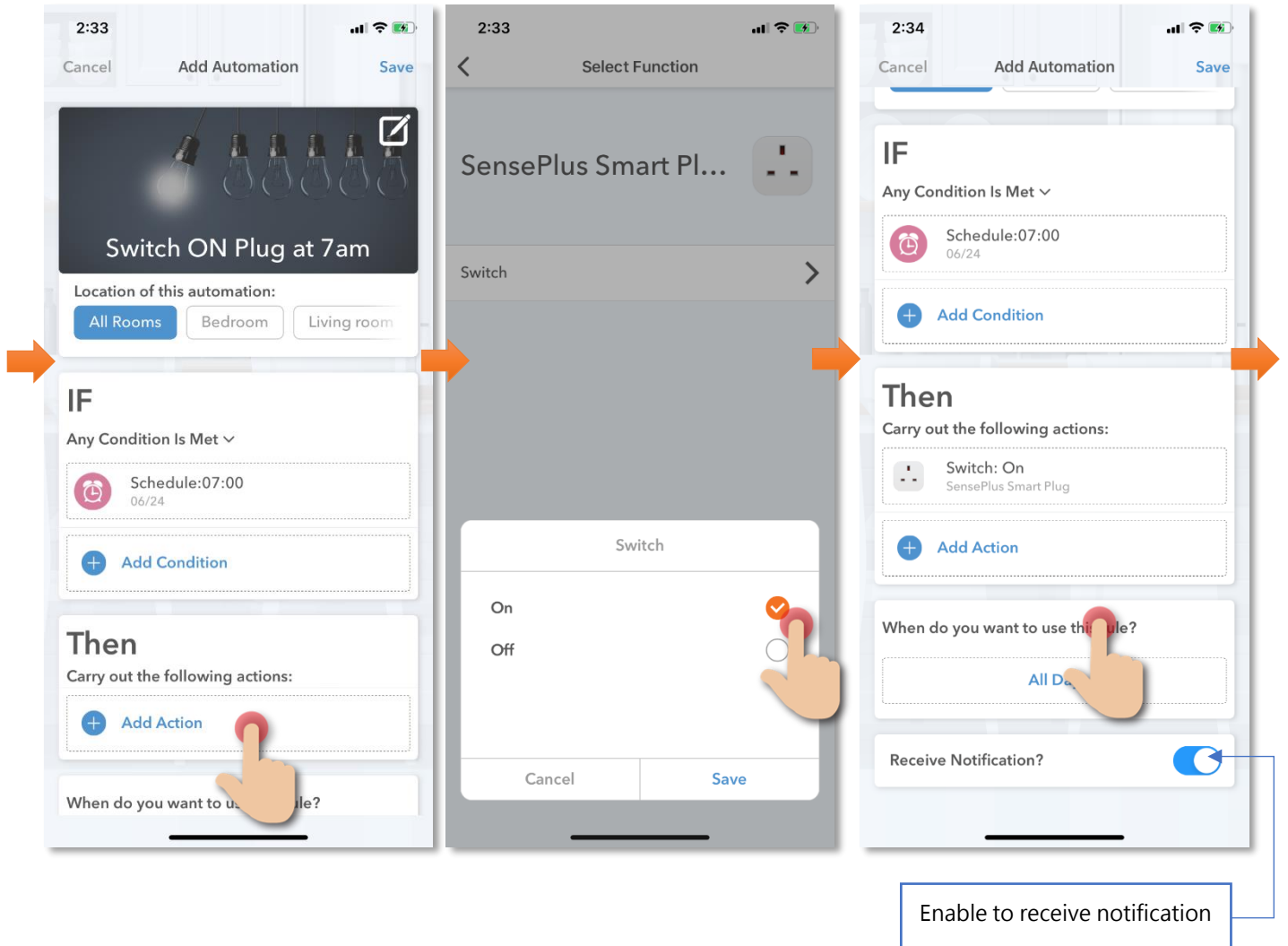




4. Tap “Add Action”

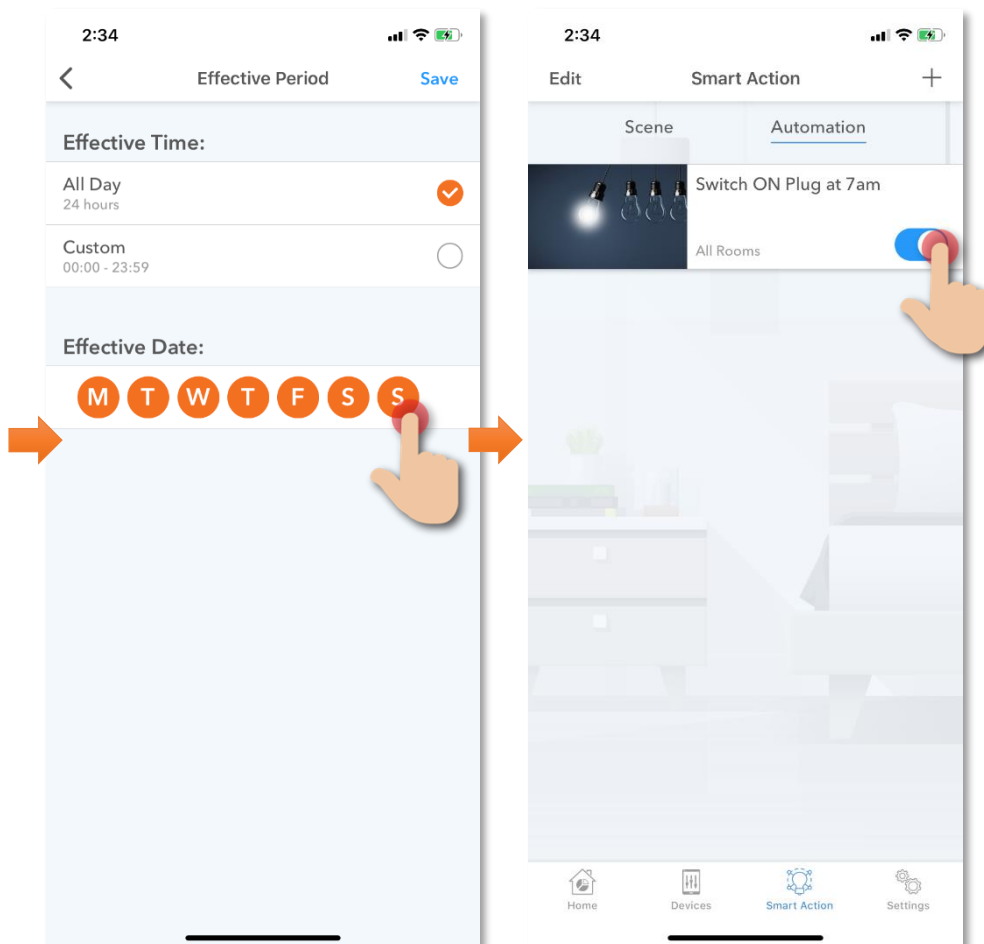
5. Select “SensePlus Smart Plug”, in “Power” select “On”

6. Tap “All Day” and then set the effective automation time

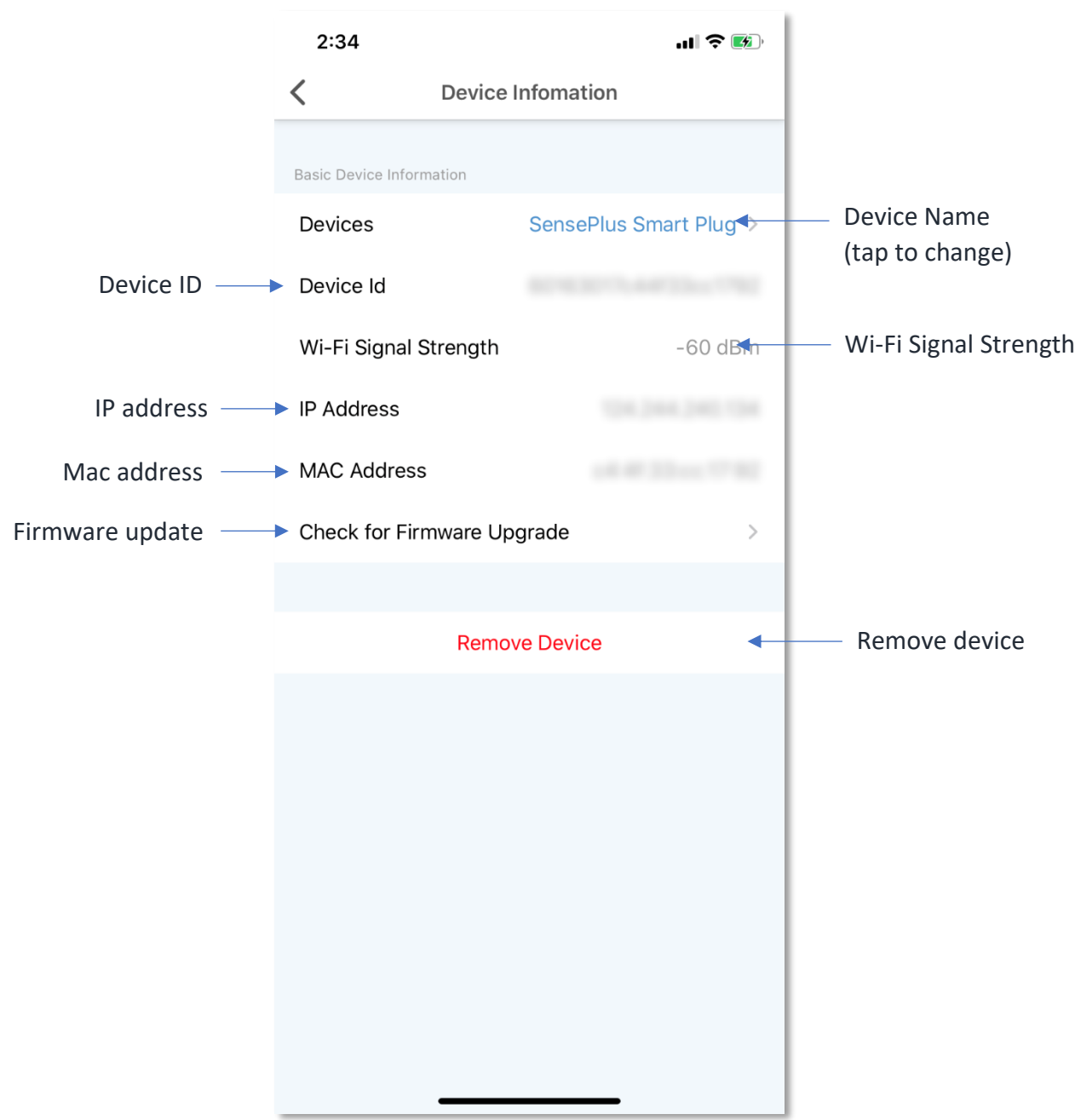


7. Select "All Day" to enable 24 hours or customize the effective period. (If the time is out of the effective period, the automation will not be triggered even if met the conditions

8. Save to complete. In the page of automation, you can enable or disable automation



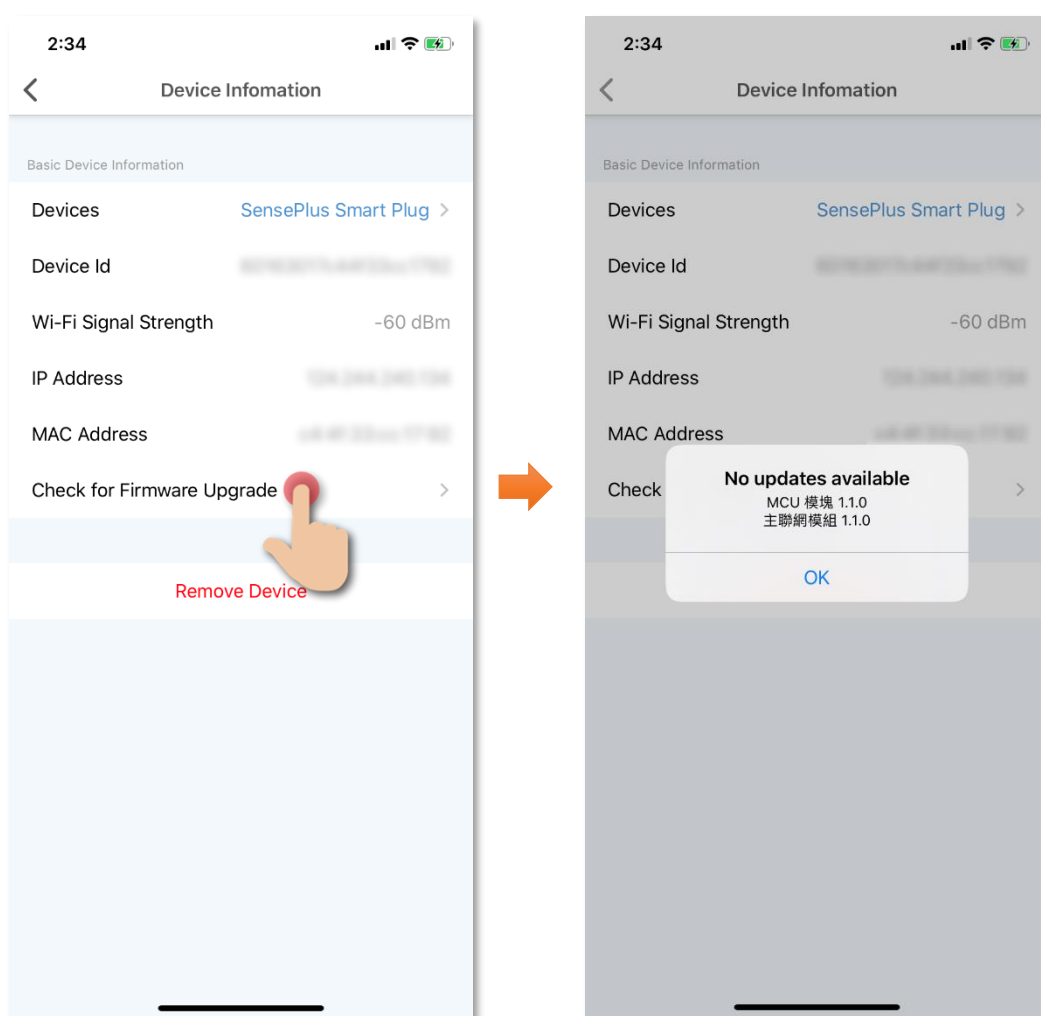
# Device Information



# Device Information

- **Check for Firmware Upgrade**

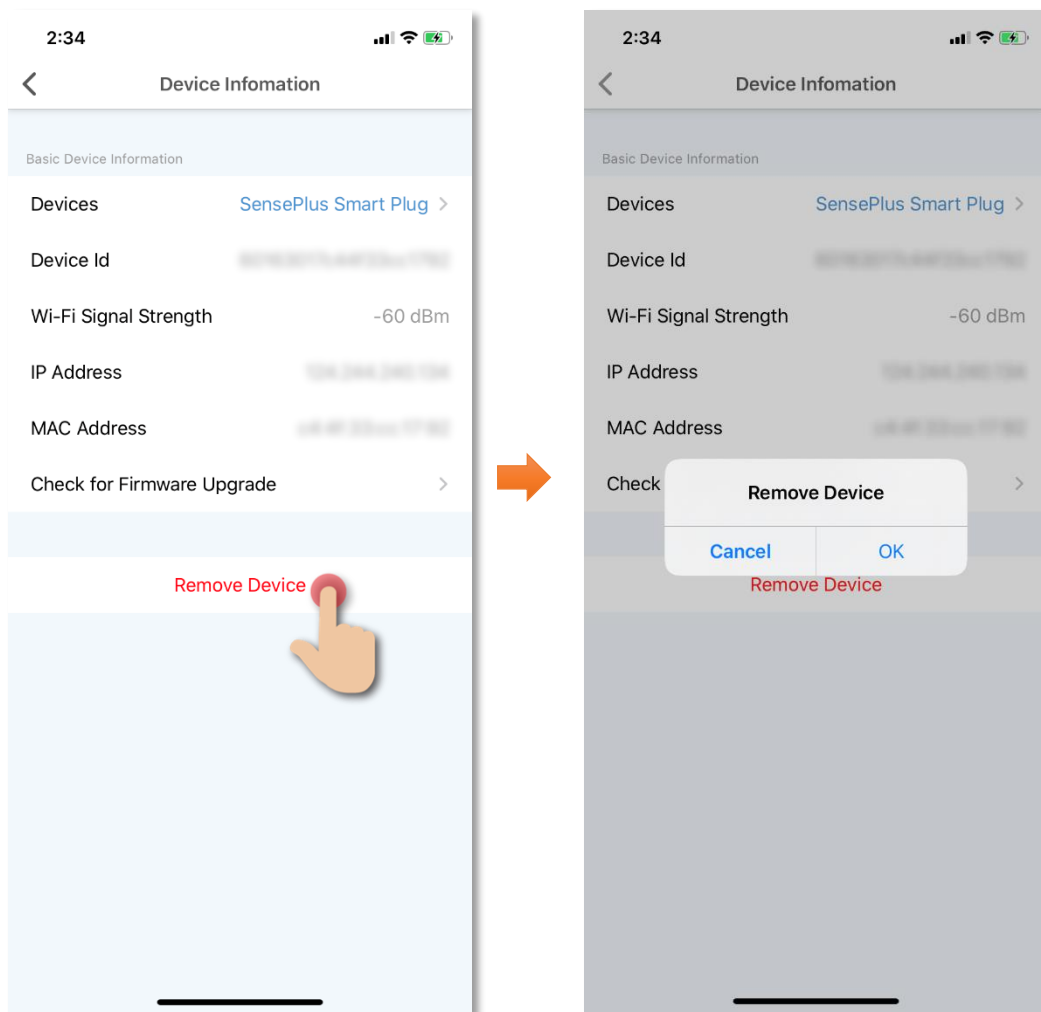
Tap “Check for Firmware Upgrade”, you can see current firmware version and available upgrade version (if any). Tap “Upgrade” to start firmware upgrade.



# Device Information

- **Remove Device**

1. In device settings page, tap “Remove Device”.
2. Tap “OK” to confirm and remove device from your account.



# FAQ

## 1. **How to reset and add device?**

Step 1: Remove device in the HKBN Smart App.

Step 2: Tap “Devices” on the bottom menu; then tap “Add Device” button OR “+” icon at top right corner if you already have paired device;

Step 3: Select the category from the left menu and tap the device icon. Tap “SensePlus Smart Plug” from left menu “Power Switch”;

Step 4: Turn on the device and hold the power button for at least 5 seconds. Confirm that the indicator is blinking fast.

Step 5: Select 2.4GHz Wi-Fi network and enter password, and then tap “Next”; please allow few minutes for it to pair. (If you have 2.4GHz and 5GH Wi-Fi channel and they are using same SSID, we suggest to edit it to different name before pairing. If you insist to use same SSID on two channels, please turn off the 5GHz channel first before pairing.)

## 2. **How to change device Wi-Fi network**

Please reset the device (follow the steps in Q1).

## 3. **What if I changed original Wi-Fi Network Name/ Password**

Please reset the device (follow the steps in Q1).

## 4. **Failed to add or connect device**

**Please check below situations which will make you fail to add and connect device:**

1. Please check if the router user name has characters that are not alphanumerical (Such as Chinese characters);
2. Confirm that the router is 2.4G as the device currently does not support 5G;
3. Verify that the router's account and password are correct;
4. Confirm that the Wi-Fi network is running smoothly, the distance between device and the Wi-Fi router should not exceed 10 meters
5. Router encryption must be WPA-PSK/WPA2-PSK, with a minimum of 8 characters password;
6. Router password must not contain Chinese characters or use encryptions other than WPA-PSK/ WPA2-PSK.

# Specifications

- Compliance with: CE, RoHS, BS 1363-3, EN 60669
- Input: 220 – 240V, 50/60Hz
- AC Output: 220 – 240V, 50/60Hz, 3120W Max
- Maximum Load: 13A
- Wireless Standard: IEEE 802.11b/g/n, 2.4GHz
- Dimensions: 58 x 58 x 64mm
- Weight: 90g

# Product Maintenance and Warranty

For the enquiry of product maintenance and warranty, please contact the product distributor/ manufacturer below:

## **Maxisense IoTech Limited**

- Service Center : Room 1010, Peninsula Tower, 538 Castle Peak Road, Cheung Sha Wan, Kowloon, Hong Kong
- Tel.: (852) 3500 8222
- Email: [info@Maxisense.io](mailto:info@Maxisense.io)
- Working Hour: (Monday to Friday) 9:30am - 12:30pm, 2:00pm - 6:00pm  
(No service on Saturday, Sunday and Public Holiday)

If you would like to check the device on the same day, please call to make an appointment to avoid long waiting time.

Just in case the hotline is busy, please leave a voice message and your enquiry will be responded to as soon as possible.

Should you have any query, please call our Customer Service Hotline at 128 100.